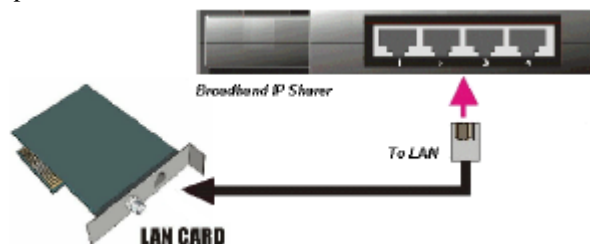


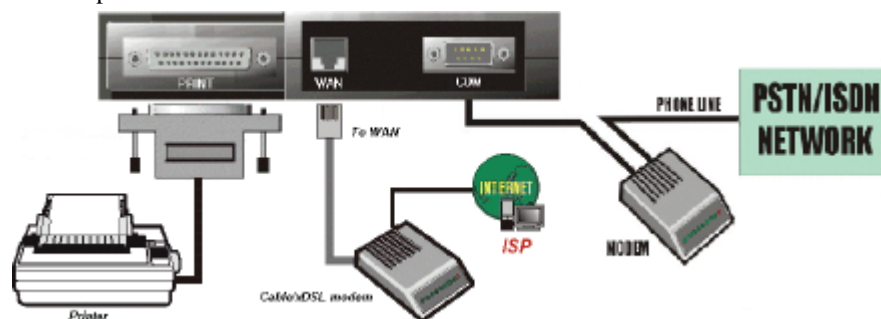
Barricade Quick Installation Guide

A. Hardware Installation

1. **Set up LAN connection:** Connect an Ethernet cable from your computer's Ethernet port to one of the LAN ports of the Barricade.



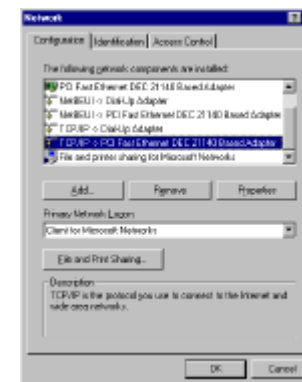
2. **Set up WAN connection:** Connect the network cable from your cable (or DSL) modem to the WAN port of the Barricade.



3. **Connecting the Barricade with your printer:** use the printer cable to connect your printer to the printer port of this product. (Optional)
4. **Power on:**
Connect the power adapter to the power inlet and turn the power switch on. The Barricade will automatically enter the self-test phase. When it is in this phase, the indicators M1 will be light up for about 5 seconds, and then M1 will flash 3 times to indicate that the self-test operation has finished. Finally, the M1 will continuously flash once per second to indicate that the device is operating normally.

B. The correct TCP/IP settings for your computer

1. Install the TCP/IP protocol for your PC if it has not yet been done. (Please refer to *User Manual - Appendix B.1.*)
2. From the Windows **Start** button on your PC, choose **Settings**, and select the **Control Panel** item.
3. Double click the **Network** icon. Select the TCP/IP line that has been assigned to your network card in the **Configuration** tab of the Network window.



4. Click on the **Properties** button. Click the **IP Address** tab. Select **Obtain an IP address automatically**.



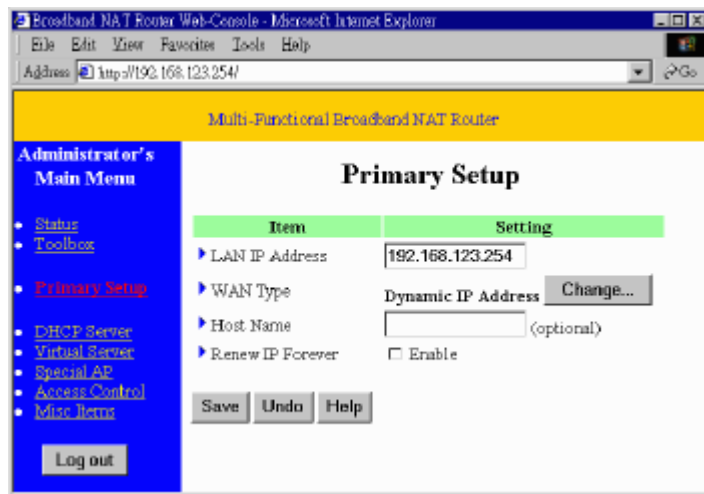
5. Click the **Gateway** tab. Clear all of the gateway settings. Click on the **OK** button.



(Note. If you want to set the IP of your PC manually, please refer to *User Manual – Appendix B.2.*)

C. Configuring Your Barricade with a Web Browser

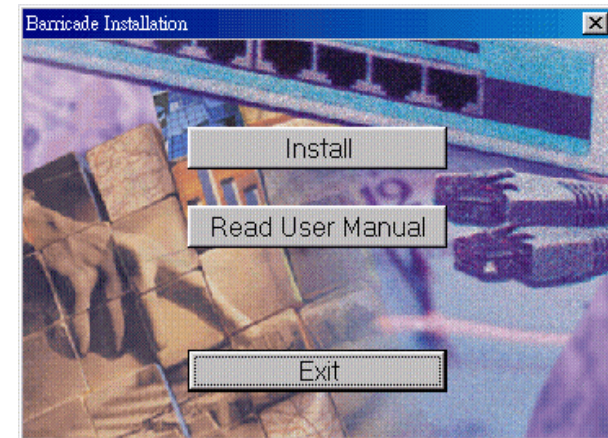
1. Activate your browser, and **disable the proxy** or **add the IP address of this product into the exceptions**. Type the Barricade's IP address (for example: **http://192.168.123.254**) in the *Location* (for Netscape) or *Address* (for IE) field and press ENTER.
2. Key in the system password (the factory default setting is "**admin**") in the *System Password* field and click on the **Log in** button.
3. Click the **Primary Setup** and the following screen will be shown.



4. Press the **Change** button, select the WAN type you are using, and then press the **Save** button.
5. Key in the proper values for the setting items shown on the page. For definitions, please refer to the on-line help or **User Guide - Chapter 4.4**. If you are @Home's user, please refer to **User Guide - Appendix C.1**; if your ISP binds your connection with the MAC Address, please refer to **User Guide - Appendix C.2**
6. After all of the items are set, press the **Save** button and reboot your Barricade.

D. Using the Installation CD

1. Insert the Installation CD into your PC's CD-ROM drive. The following window will be shown automatically. If it isn't, please run "install.exe" on the CD-ROM.



2. If you want to install the **Print Server**, please click on the "Install" button and follow the on screen instructions to complete the installation.
3. To review the user manual, please click on the "Read User Manual" button.
4. If you do not have a viewer for the user manual, you can execute "**rs405eng.exe**" or "**wd97vwr32.exe**" in the "**viewer**" sub-directory to install the **Adobe Acrobat Reader** or **Microsoft Word Viewer**.