

Barricade™ Broadband Router

10/100 Mbps Broadband Router

- ◆ Instant Internet Sharing
- ◆ Firewall Security
- ◆ Simultaneous Web access for up to 253 PCs
- ◆ Built-in 10/100 Mbps switch
- ◆ Integrated print server
- ◆ Works with PCs or Macs

Table of Contents

Congratulations on your purchase of the SMC Barricade™ Broadband Router.....	1
Hardware Setup	2
Configuring Your Computer.....	3
Configuring Your Computer with Windows 95/98/ME	3
Configuring Your Computer with Windows 2000	8
Configuring Your Computer with Windows NT 4.0	13
Configuring Your Macintosh Computer.....	17
Configuring Your Barricade.....	21
Configuring Your Barricade for a Dynamic IP Address	24
Configuring Your Barricade for a Static IP Address.....	26
Configuring Your Barricade for PPPoE	28
Configuring Your Barricade for Dialup on Demand	30
Configuring Your Computer for the Barricade Print Server	31
Configuring Your Computer for the Barricade Print Server for Windows 95/98/NT/ME/2000	31
Configuring Your Computer for the Barricade Print Server	33
Configuring Your Computer for the Barricade Print Server for Windows 95/98/NT/ME/2000	33
Configure the Network Printer in Unix Systems	35

Congratulations on your purchase of the SMC Barricade™ Broadband Router.

The SMC Barricade is a Broadband Router designed to share Internet Access, provide security, and to network multiple devices for a variety of users. The Barricade's simple installation setup can be used by the least experienced of users, while providing networking professionals with easy to configure advanced features. Please read the User Guide for advanced features of this product.

Thank you for purchasing an SMC product. We know you will enjoy the many features of the SMC Barricade.

This Package Contains

- One SMC Barricade
- One Power Adapter
- This Quick Installation Guide
- One Installation CD
- One Category 5 Fast Ethernet Cable

Confirm That You Meet Installation Requirements

Before proceeding with the installation of your Barricade, please be sure you have the following:

- A computer with an Ethernet network card installed.
- Your Windows CD, if your computer is running Windows 95, 98, or ME
- An Internet connection through a cable or DSL modem or an external dial-up or ISDN modem.
- An additional Ethernet network cable.
- A Web browser such as Internet Explorer or Netscape.

Hardware Setup

SMC7004ABR – Front Panel



SMC7008ABR – Front Panel



1. **Connecting Computers:** Connect computers directly to the Barricade on ports **1-4/8** on the front panel. If you have more than 4/8 computers to plug in, connect a hub or a switch (using its uplink port) and connect additional computers to that device.
2. **Connecting a Cable Modem or DSL Modem:** Connect your Cable or DSL modem to the **WAN** port on the rear panel.
3. **Connecting a Dial-up Modem:** If you use an external dial-up modem or ISDN modem, connect it to the **COM** port on the rear panel.
4. **Connecting a Printer:** If you have a printer that you want to share between computers, connect it to the **Printer** port using a standard parallel printer cable.
5. **Power:** Plug the power cord into the power jack.

SMC7004ABR – Rear Panel



SMC7008ABR – Rear Panel



Indicator LEDs

The front panel of the Barricade provides indicator LEDs (Light Emitting Diodes) for easy monitoring. The following table defines the function of each LED.

LED	Condition	Status
Power (green)	On	Barricade is receiving power.
WAN (green)	On	The WAN port has established a valid network connection.
	Flashing	The WAN port is transmitting or receiving data.
Link/Act (green)	On	The indicated LAN port has established a valid network connection.
	Flashing	The indicated LAN port is transmitting or receiving data.
10/100 (amber)	On	The indicated LAN port is operating at 100Mbps.
	Off	The indicated LAN port is operating at 10Mbps.
FDX/COL (SMC7008ABR)	On	The indicated LAN port is operating in full-duplex mode.
	Flashing	A collision occurred on the indicated LAN port.

Configuring Your Computer

This Quick Installation Guide provides configuration instructions for Windows 95, 98, ME, NT 4.0, and 2000 and for Macintosh OS 7.x. Please be sure that you are following the proper instruction set for your operating system.

- **Configuring Your Computer with Windows 95/98/ME** begins on this page.
- **Configuring Your Computer with Windows 2000** begins on page 8.
- **Configuring Your Computer with Windows NT 4.0** begins on page 12.
- **Configuring Your Macintosh Computer** begins on page 17.

Configuring Your Computer with Windows 95/98/ME

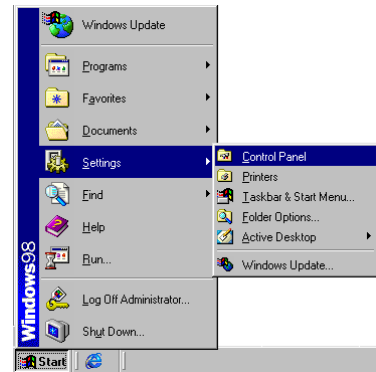
You may find that the instructions here do not exactly match your version of Windows. This is because these steps and screenshots were created from Windows 98. Windows 95 and Windows Millennium Edition are very similar, but not identical, to Windows 98.

Step 1. Configure TCP/IP Settings

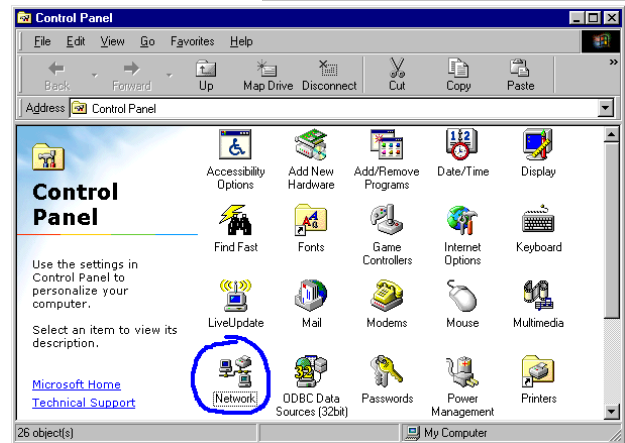
After you have completed the hardware setup by connecting your devices, you need to configure your computer to connect to your Barricade. You need to determine how your ISP issues your IP address. Many ISPs issue these numbers automatically using a networking technology known as Dynamic Host Control Protocol, or DHCP. Other ISPs will specify your IP address and associated numbers, which you must enter manually. This is also known as a static IP address. How your ISP assigns your IP address determines how you will configure your computer.

Here is what to do:

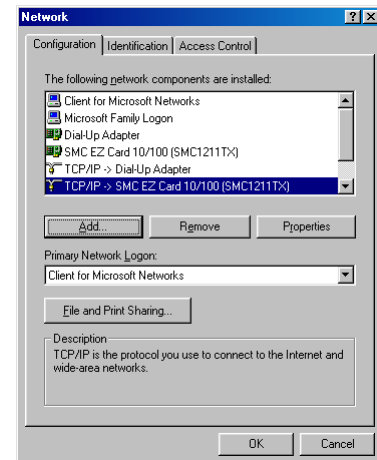
1. From the Windows desktop, click the “Start” button. Choose “Settings,” then click “Control Panel.”



2. From “Control Panel,” double-click the “Network” icon.



3. In the “Network” window, under the “Configuration” tab, double-click the “TCP/IP” entry that is listed with your network card.

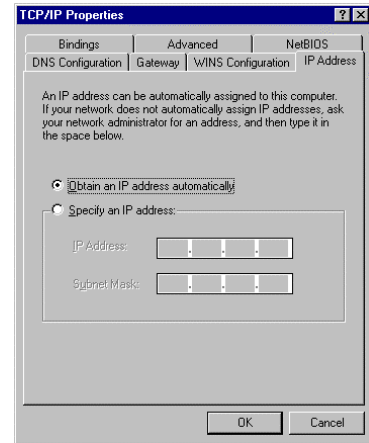


4. Select the “IP Address” tab.

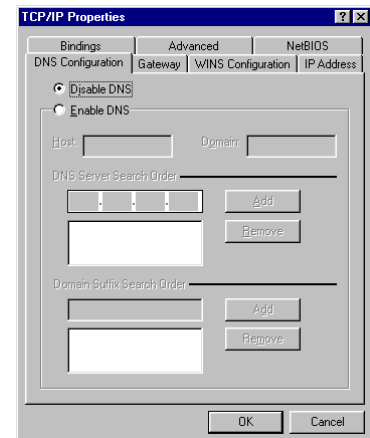
If “Obtain an IP address automatically” is already selected, your computer is already configured for DHCP. Click “Cancel” to close each window, and skip to Step 2 “Disable HTTP Proxy.”

5. Locate your IP address and Subnet Mask. Record them in the spaces provided below.

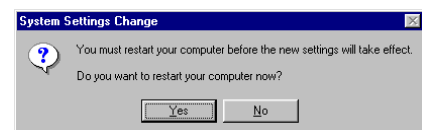
6. Click the “Gateway” tab and record the numbers listed under “Installed gateways.”



7. Click the “DNS Configuration” tab. Locate the DNS servers listed under “DNS Server Search Order.” Record the listed addresses.
8. After writing down your settings, check to make sure you have recorded them correctly. Click the “IP Address” tab and then click “Obtain an IP address automatically.” Click OK.



9. Windows may need your Windows 95/98/ME CD to copy some files. After it finishes copying, it will then prompt you to restart your system. Click “Yes” and your computer will shut down and restart.



TCP/IP Configuration Setting

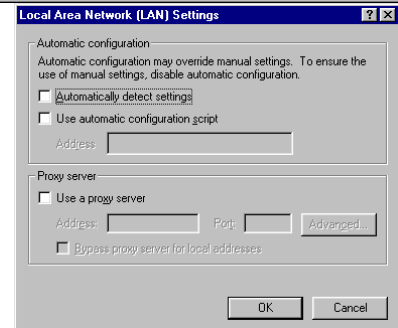
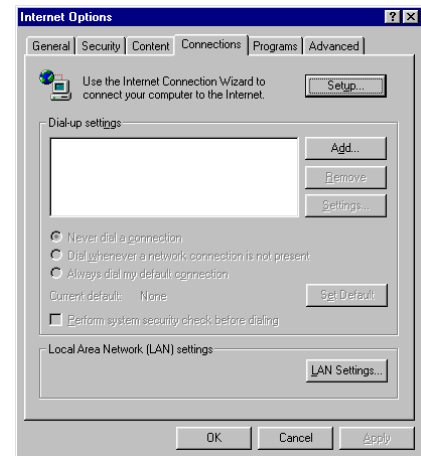
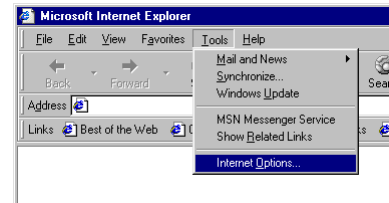
IP Address	_____ . _____ . _____ . _____
Subnet Mask	_____ . _____ . _____ . _____
Primary DNS Server	_____ . _____ . _____ . _____
Secondary DNS Server	_____ . _____ . _____ . _____
Default Gateway	_____ . _____ . _____ . _____

Step 2. Disable HTTP Proxy

You will need to verify that the “HTTP Proxy” feature of your Web browser is disabled. This is so that your Web browser will be able to view the configuration pages inside your Barricade. The following steps are for Internet Explorer and for Netscape. Determine which browser you use and follow the appropriate steps.

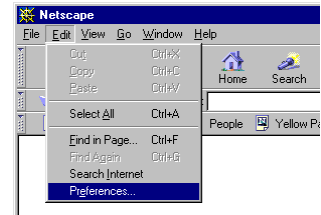
Internet Explorer

1. Open Internet Explorer and click the stop button. Click “Tools,” then “Internet Options.”
2. In the “Internet Options” window click the “Connections” tab. Next, click the “LAN Settings...” button.
3. Clear all the checkboxes.
4. Click “OK,” and then click “OK” again to close the “Internet Options” window.

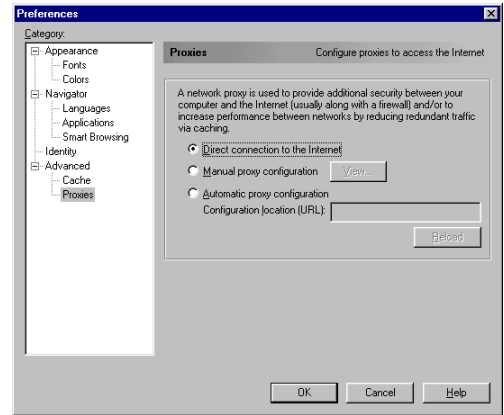


Netscape

1. Open Netscape and click the stop button. Click “Edit,” then click “Preferences...”



2. In the “Preferences” window, under “Category” double-click “Advanced,” then click “Proxies.” Select “Direct connection to the Internet.” Click “OK.”

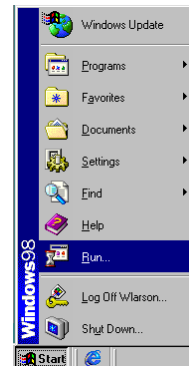


3. Repeat these steps for each Windows 95/98/Me computer connected to your Barricade.

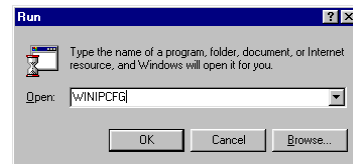
Step 3. Obtain IP Settings from Your Barricade

Now that you have configured your computer to connect to your Barricade, it needs to obtain new network settings. By releasing any old IP settings and renewing them with settings from your Barricade, you will also verify that you have configured your computer correctly.

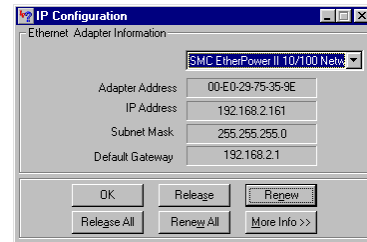
1. Click “Start,” then “Run...”



2. Type “WINIPCFG” and click “OK.” It may take a minute or two for the “IP Configuration” window to appear.



- From the drop-down menu, select your network card. Click “Release” and then “Renew.” **Verify that your IP address is now 192.168.2.xxx, your Subnet Mask is 255.255.255.0 and your Default Gateway is 192.168. 2.1. These values confirm that your Barricade is functioning.** Click “OK” to close the “IP Configuration” window.



Now that your computer is configured to connect to your Barricade, please skip to “[Configuring Your Barricade](#)” on page 21.

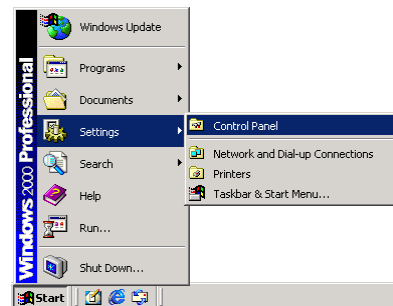
Configuring Your Computer with Windows 2000

Step 1. Configure TCP/IP Settings

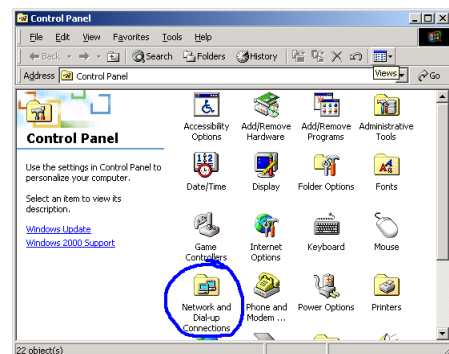
After you have completed the hardware setup, you need to configure your computer to connect to your Barricade. You also need to determine how your ISP issues your IP address. Many ISPs issue these numbers automatically, using a networking technology known as Dynamic Host Control Protocol, or DHCP. Other ISPs will specify your IP address and associated numbers, which you must enter manually. This is also known as a static IP address. How your ISP assigns your IP address determines how you will configure your computer.

Here is what to do:

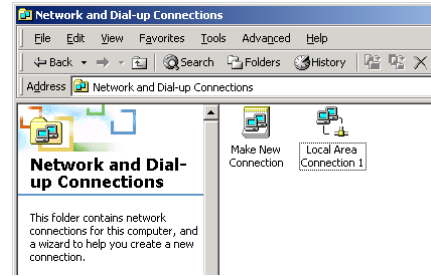
- From the Windows desktop, click the “Start” button. Choose “Settings,” then click “Control Panel.”



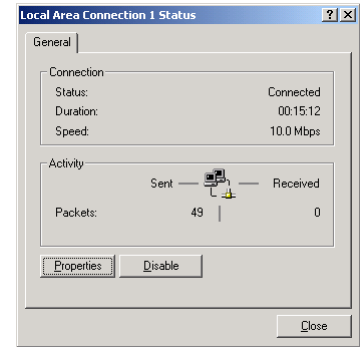
- Double-click the “Network & Dial-Up Connections” icon.



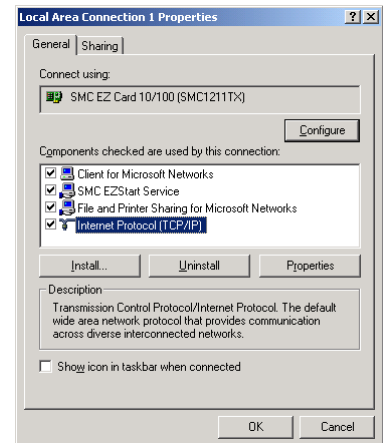
3. Double-click the icon that corresponds to the connection to your Barricade.



4. Click “Properties.”



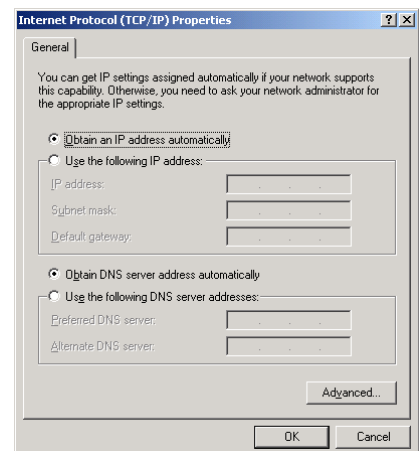
5. Double-click “Internet Protocol (TCP/IP).”



6. All the information that you need to record is on the “Internet Protocol (TCP/IP) Properties” dialog box. Use the spaces below to record the information.

If “Obtain an IP address automatically” and “Obtain DNS server address automatically” are already selected, your computer is already configured for DHCP. Click “Cancel” to close each window, and skip to Step 2 “Disable HTTP Proxy.”

7. Select “Obtain an IP address automatically” and then select “Obtain DNS server address automatically.” Then click “OK.” Click “OK” or “Close” to close each window.



TCP/IP Configuration Setting

IP Address	_____ . _____ . _____ . _____
Subnet Mask	_____ . _____ . _____ . _____
Primary DNS Server	_____ . _____ . _____ . _____
Secondary DNS Server	_____ . _____ . _____ . _____
Default Gateway	_____ . _____ . _____ . _____

Step 2. Disable HTTP Proxy

You will need to verify that the “HTTP Proxy” feature of your Web browser is disabled. This is so that your Web browser will be able to view the configuration pages inside your Barricade. The following steps are for Internet Explorer and for Netscape. Determine which browser you use and follow the appropriate steps.

Internet Explorer

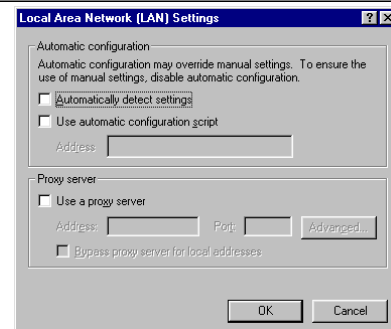
1. Open Internet Explorer and click the stop button. Click “Tools,” then “Internet Options.”



2. In the “Internet Options” window click the “Connections” tab. Next, click the “LAN Settings...” button.

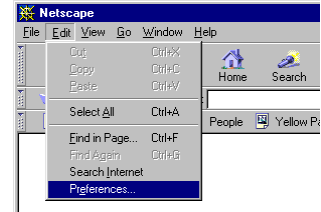


3. Clear all the checkboxes.
4. Click “OK,” and then click “OK” again to close the “Internet Options” window.

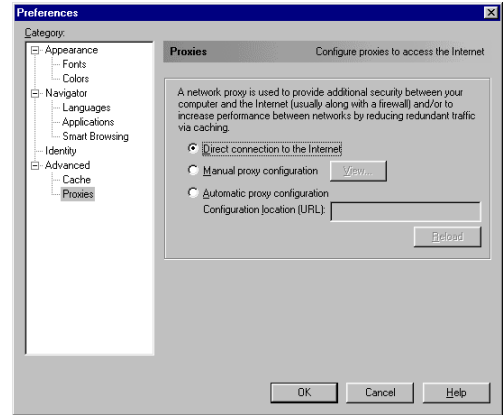


Netscape

1. Open Netscape and click the stop button. Click “Edit,” then click “Preferences...”



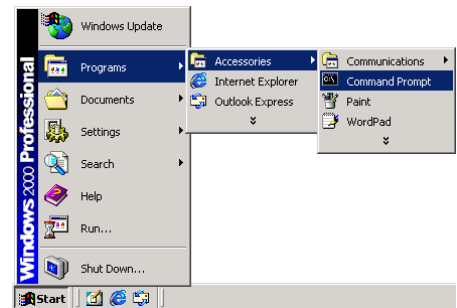
2. In the “Preferences” window, under “Category” double-click “Advanced,” then click “Proxies.” Select “Direct connection to the Internet.” Click “OK.”



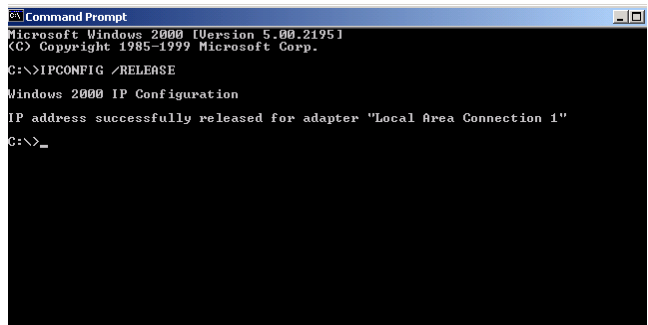
Step 3. Obtain IP Settings From Your Barricade

Now that you have configured your computer to connect to your Barricade, it needs to obtain new network settings. By releasing any old IP settings and renewing them with settings from your Barricade, you will also verify that you have configured your computer correctly.

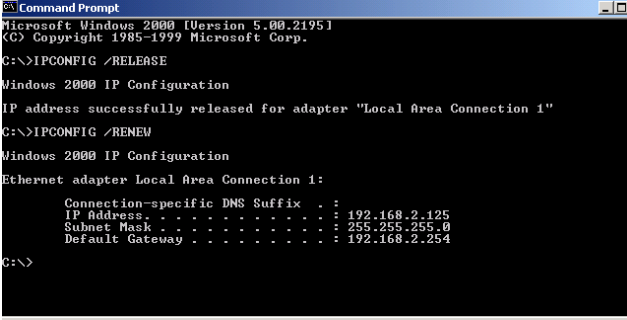
1. From the Windows desktop, click the “Start” button, then “Programs,” then “Accessories,” and then click “Command Prompt.”



2. In the “Command Prompt” window, type “IPCONFIG /RELEASE” and press the <ENTER> key.



3. Type “IPCONFIG /RENEW” and press the <ENTER> key. **Verify that your IP address is now 192.168.2.xxx (2-255), your Subnet Mask is 255.255.255.0 and your Default Gateway is 192.168.2.1. These values confirm that your Barricade is functioning.**



```
Microsoft Windows [Version 5.00.2195]
(C) Copyright 1985-1999 Microsoft Corp.

C:\>IPCONFIG /RELEASE

Windows 2000 IP Configuration

IP address successfully released for adapter "Local Area Connection 1"

C:\>IPCONFIG /RENEW

Windows 2000 IP Configuration

Ethernet adapter Local Area Connection 1:

    Connection-specific DNS Suffix  . : 
    IP Address. . . . . : 192.168.2.125
    Subnet Mask . . . . . : 255.255.255.0
    Default Gateway . . . . . : 192.168.2.254

C:\>
```

4. Type “EXIT” and press <ENTER> to close the “Command Prompt” window.

Now that your computer is configured to connect to your Barricade, please skip to “[Configuring Your Barricade](#)” on page 21.

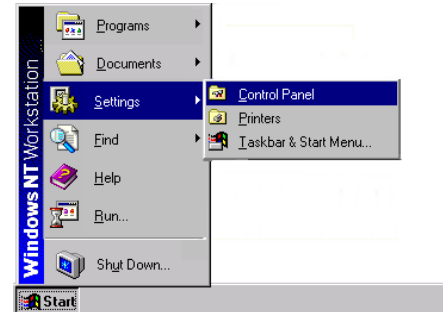
Configuring Your Computer with Windows NT 4.0

Step 1. Configure TCP/IP Settings

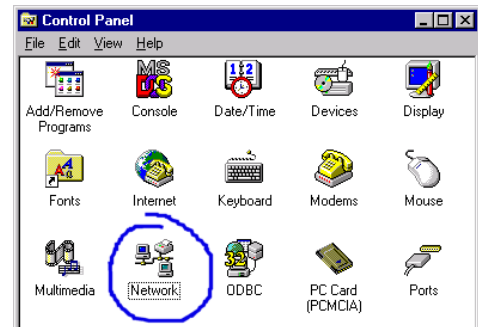
After you have completed the hardware setup, you need to configure your computer to connect to your Barricade. You need to determine how your ISP issues your IP address. Many ISPs issue these numbers automatically using a networking technology known as Dynamic Host Control Protocol, or DHCP. Other ISPs will specify your IP address and associated numbers, which you must enter manually. This is also known as a static IP address. How your ISP assigns your IP address determines how you will configure your computer.

Here is what to do:

1. From the Windows desktop click “Start,” then “Settings,” and click “Control Panel.”

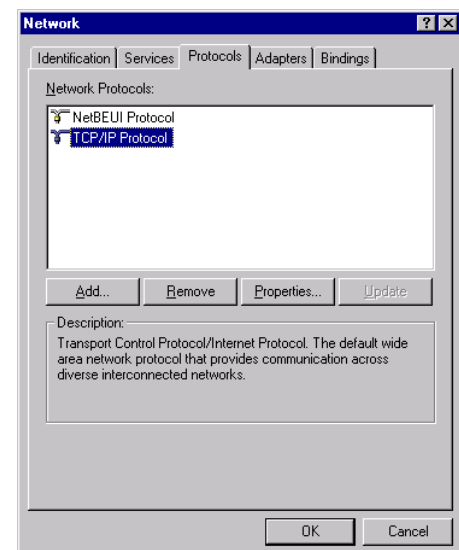


2. Double-click the “Network” icon.



3. Select the “Protocols” tab.

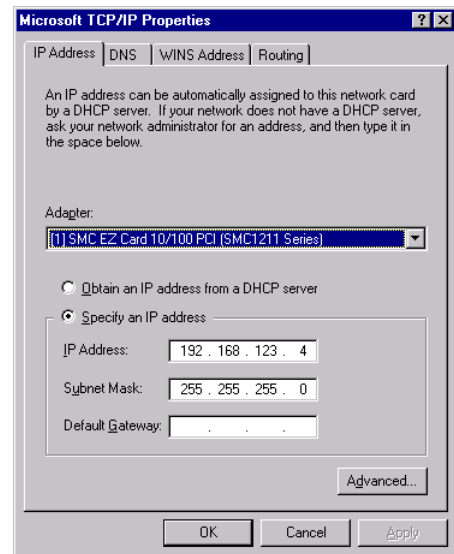
4. Double-click “TCP/IP Protocol.”



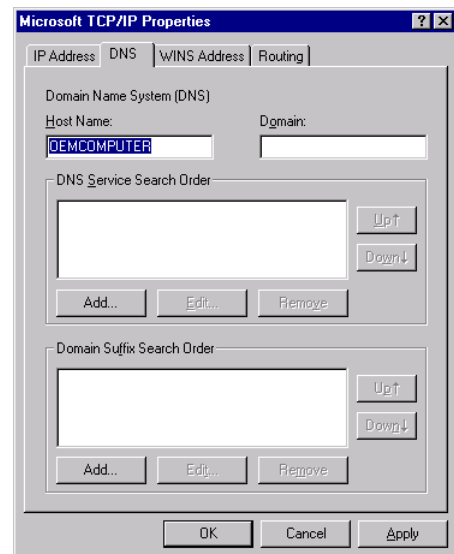
5. Select the “IP Address” tab.
6. In the “Adapter” drop-down list, be sure your Ethernet adapter is selected.

If “Obtain an IP address automatically” is already selected, your computer is already configured for DHCP. Click “Cancel” to close each window, and skip to Step 2 “Disable HTTP Proxy.”

7. In the “TCP/IP Properties” dialog box, click the IP address tab to locate your IP address, subnet Mask, and default gateway. Record these values in the space provided below.



8. Click the “DNS” tab to see the primary and secondary DNS servers. Record these values in the appropriate spaces below.
9. After writing down your IP settings, click the IP address tab. Select “Obtain IP address automatically” and click OK. Click OK again to close the “Network” window.
10. Windows may copy some files, and will then prompt you to restart your system. Click “Yes” and your computer will shut down and restart.



TCP/IP Configuration Setting

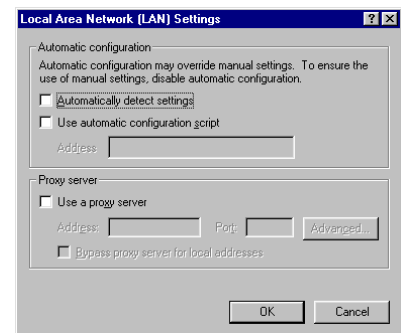
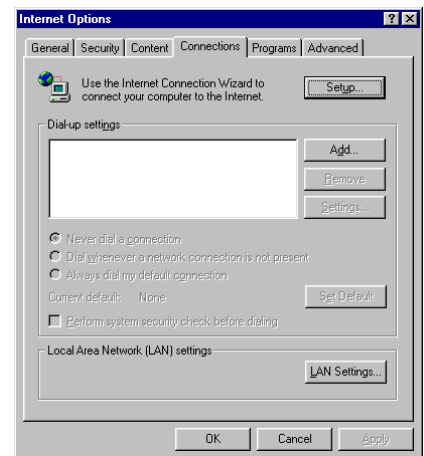
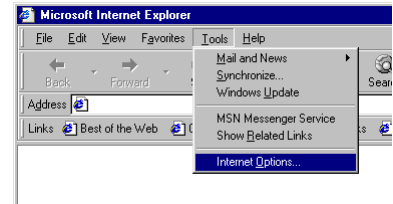
IP Address	____.____.____.____
Subnet Mask	____.____.____.____
Primary DNS Server	____.____.____.____
Secondary DNS Server	____.____.____.____
Default Gateway	____.____.____.____

Step 2. Disable HTTP Proxy

You will need to verify that the “HTTP Proxy” feature of your Web browser is disabled. This is so that your Web browser will be able to view the configuration pages inside your Barricade. The following steps are for Internet Explorer and for Netscape. Determine which browser you use and follow the appropriate steps.

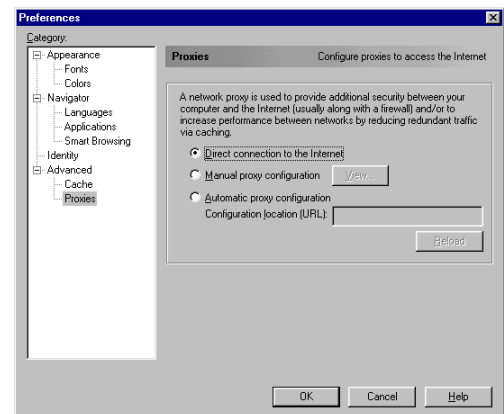
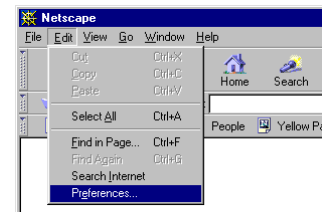
Internet Explorer

1. Open Internet Explorer and click the stop button. Click “Tools,” then “Internet Options.”
2. In the “Internet Options” window click the “Connections” tab. Next, click the “LAN Settings...” button.
3. Clear all the checkboxes.
4. Click “OK,” and then click “OK” again to close the “Internet Options” window.



Netscape

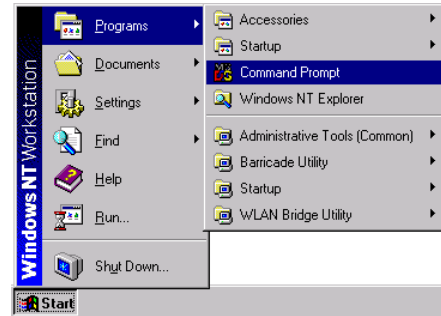
1. Open Netscape and click the stop button. Click “Edit,” then click “Preferences...”
2. In the “Preferences” window, under “Category” double-click “Advanced,” then click “Proxies.” Select “Direct connection to the Internet.” Click “OK.”



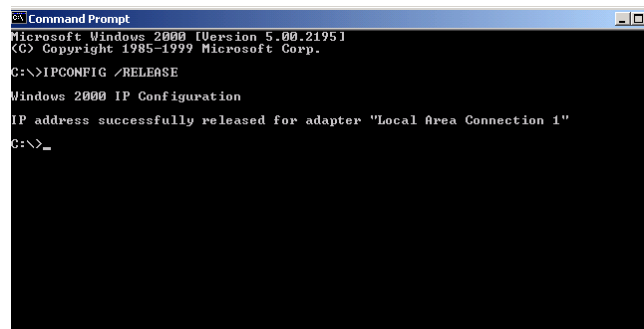
Step 3. Obtain IP Settings From Your Barricade

Now that you have configured your computer to connect to your Barricade, it needs to obtain new network settings. By releasing any old IP settings and renewing them with settings from your Barricade, you will also verify that you have configured your computer correctly.

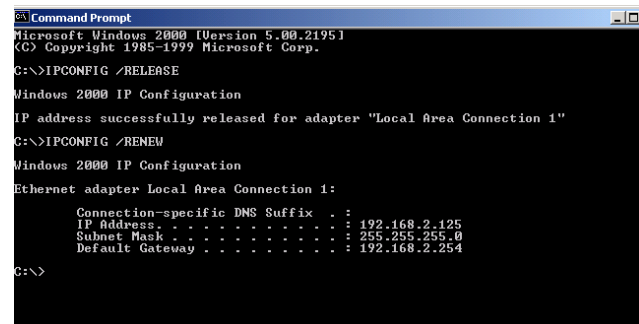
1. From the Windows desktop, click the “Start” button, then “Programs,” and then select “Command Prompt.”



2. In the “Command Prompt” window, type “IPCONFIG /RELEASE” and press the <ENTER> key.



3. Type “IPCONFIG /RENEW” and press the <ENTER> key. **Verify that your IP address is now 192.168.2.xxx, your Subnet Mask is 255.255.255.0 and your Default Gateway is 192.168.2.1. These values confirm that your Barricade is functioning.**



4. Type “EXIT” and press <ENTER> to close the “Command Prompt” window.

Now that your computer is configured to connect to your Barricade, please continue to [“Configuring Your Barricade”](#) on page 21.

Configuring Your Macintosh Computer

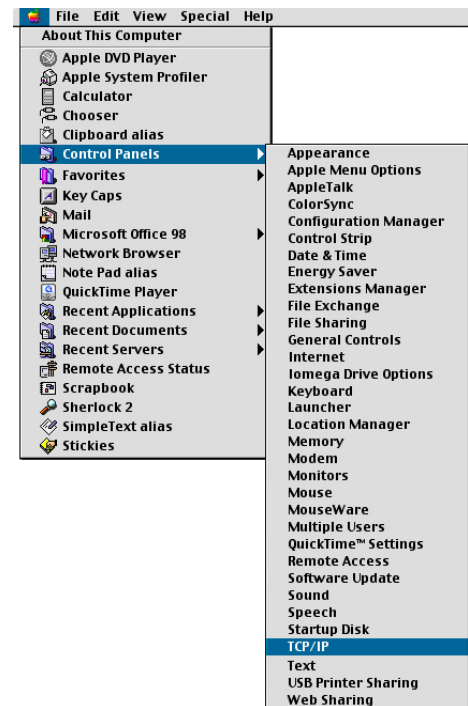
You may find that the instructions here do not exactly match your screen. This is because these steps and screenshots were created using Mac OS 8.5. Mac OS 7.x and above are all very similar, but may not be identical to Mac OS 8.5.

Step 1. Configure TCP/IP Settings

After you have completed the hardware setup, you need to configure your computer to connect to your Barricade. You need to determine how your ISP issues your IP address. Many ISPs issue these numbers automatically using a networking technology known as Dynamic Host Control Protocol, or DHCP. Other ISPs will specify your IP address and associated numbers, which you must enter manually. This is also known as a static IP address. How your ISP assigns your IP address determines how you will configure your computer.

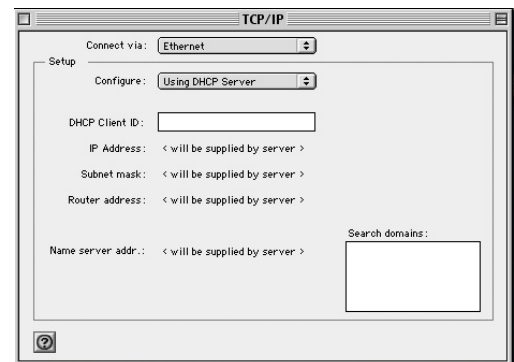
Here is what to do:

1. Pull down the Apple Menu. Click “Control Panels” and select TCP/IP.



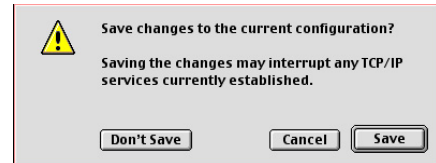
2. In the TCP/IP dialog box, make sure that “Ethernet” is selected in the “Connect Via:” field.

If “Using DHCP Server” is already selected in the “Configure” field, your computer is already configured for DHCP. Close the TCP/IP dialog box, and skip to Step 2 “Disable HTTP Proxy.”



3. All the information that you need to record is on the “TCP/IP” dialog box. Use the space below to record the information.

- After writing down your IP settings, select “Using DHCP Server” in the “Configure” field and close the window.
- Another box will appear asking whether you want to save your TCP/IP settings. Click Save.



TCP/IP Configuration Setting

IP Address _____

Subnet Mask _____

Router _____

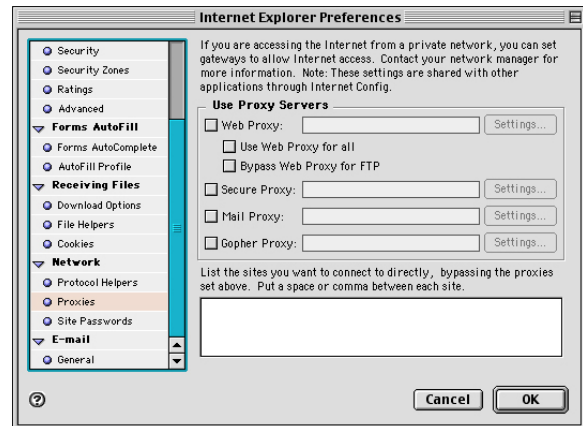
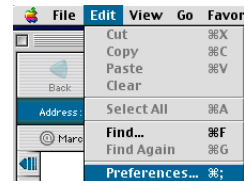
Name Server _____

Step 2. Disable HTTP Proxy

You will need to verify that the “HTTP Proxy” feature of your Web browser is disabled. This is so that your Web browser will be able to view the configuration pages inside your Barricade. The following steps are for Internet Explorer and for Netscape. Determine which browser you use and follow the appropriate steps.

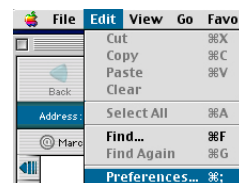
Internet Explorer

- Open Internet Explorer and click the stop button. Click “Edit” and select “Preferences.”
- In the Internet Explorer Preferences window, under Network, select Proxies.
- Uncheck all checkboxes and click OK.

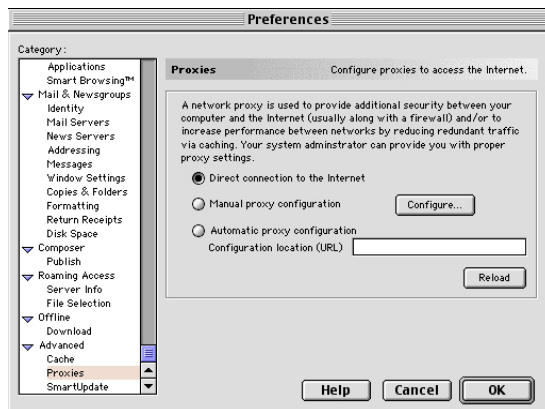


Netscape

1. Open Netscape and click the stop button. Click “Edit” and select “Preferences.”



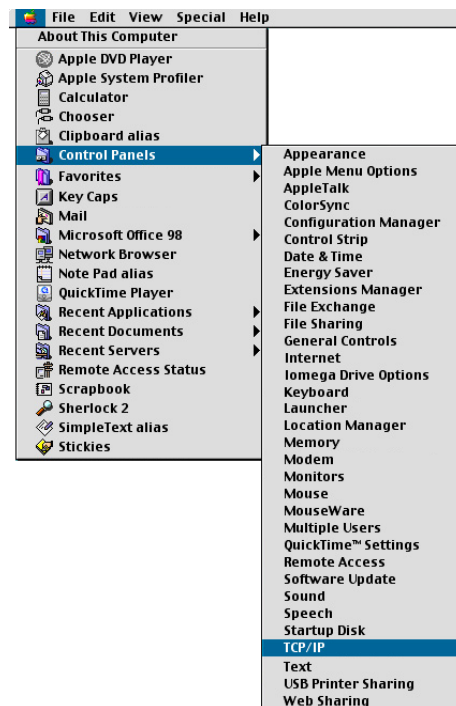
2. In the “Preferences” dialog box, In the left-hand column labeled “Category,” select “Advanced.” Under the “Advanced” category, select “Proxies.”
3. Select “Direct Connection to the Internet” and click OK



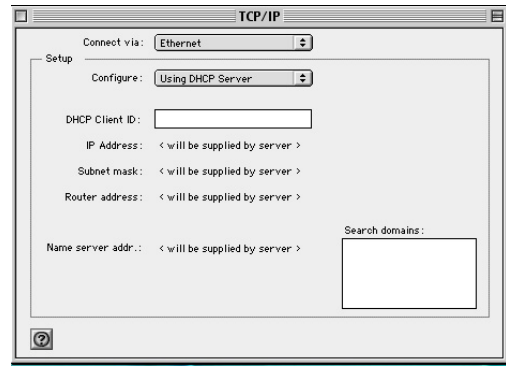
Step 3. Obtain IP Settings From Your Barricade

Now that you have configured your computer to connect to your Barricade, it needs to obtain new network settings. By releasing any old settings and renewing them with settings from your Barricade, you will also verify that you have configured your computer correctly.

1. Pull down the Apple Menu. Click “Control Panels” and select TCP/IP.



2. In the TCP/IP window, your new settings will be shown. **Verify that your IP address is now 192.168.2.xxx, your Subnet Mask is 255.255.255.0 and your Default Gateway is 192.168.2.1. These values confirm that your Barricade is functioning.**



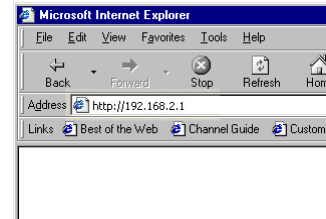
3. Close the TCP/IP window.

Now that your computer is configured to connect to your Barricade, please skip to “[Configuring Your Barricade](#)” on the next page.

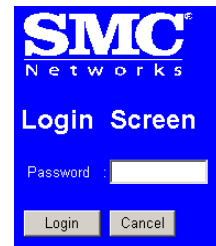
Configuring Your Barricade

Now that you have successfully configured your computer and retrieved your new network settings from your Barricade, you are ready to configure the Barricade's settings for your LAN.

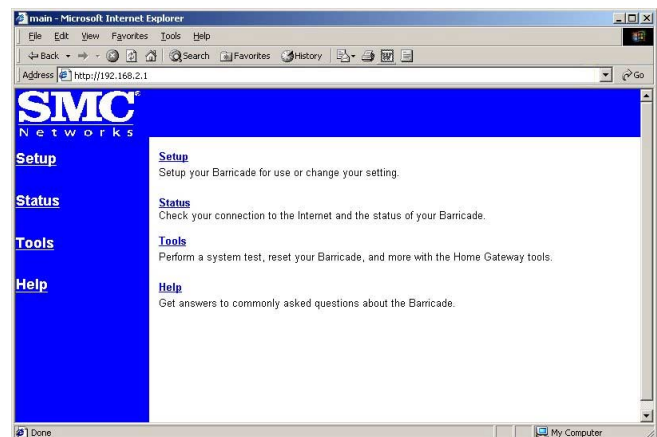
1. Open your Web browser (i.e., Internet Explorer or Netscape Navigator) and click the stop button.
2. In the "Address" field type "http://192.168.2.1" and press <ENTER>.



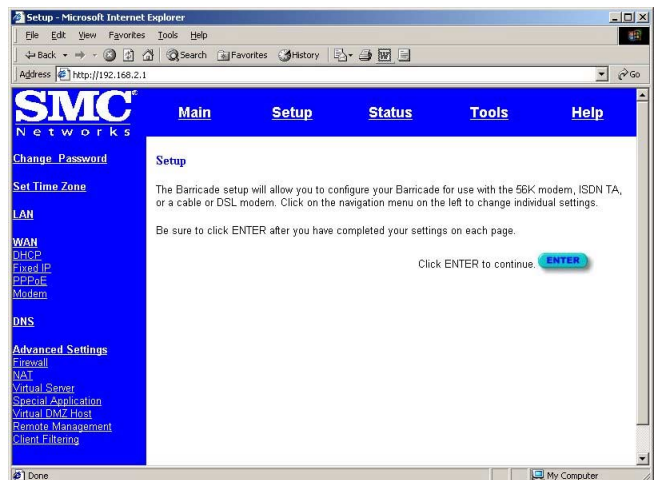
3. The Barricade login screen will appear. Leave the Password field empty and click on "login". There is no password by default. For security reasons, you should assign a password as soon as possible. Note that the password login is case sensitive.



4. On the main page of the Barricade Web console, click "Setup."



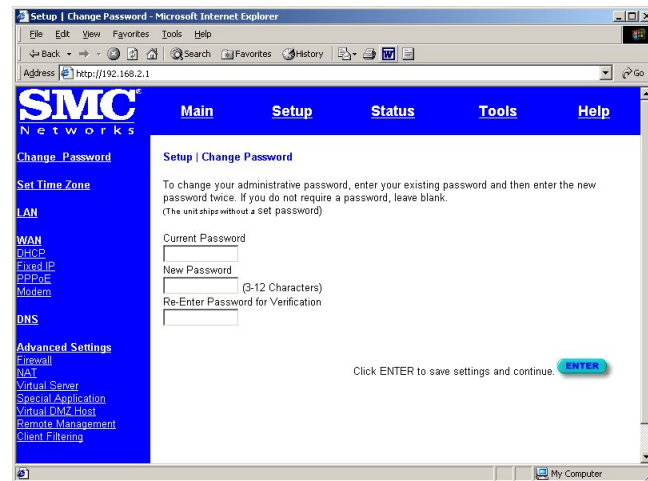
5. The Barricade's automated setup process will take you through each step for setting up your Barricade. Click "Enter" to start the process.



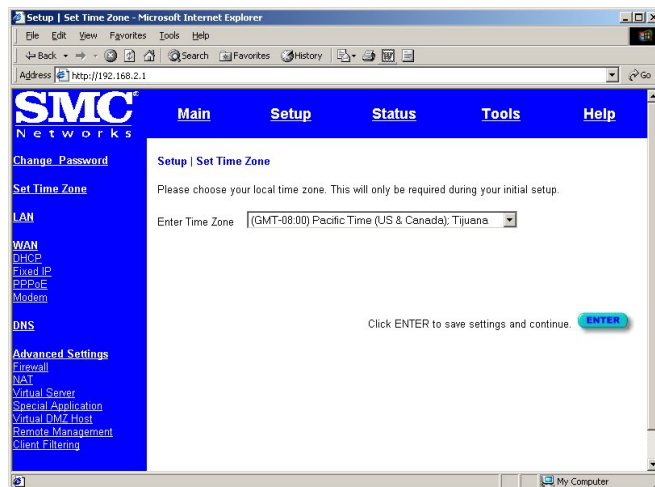
Using a password can protect your Barricade from unauthorized changes. Not using a password can easily leave your Barricade—and your network—open to security risks. We recommend using a password for the security of your network. If you use a password, write it down and keep it in a safe place, or make sure you can remember it.

6. In the “Change Password” screen, enter your current password in the “Current Password” field. If you have not yet set a password, leave it blank. Choose a password for your Barricade and enter it in the next two fields, “New Password” and “Re-Enter Password for Verification.”

7. Click “ENTER” when finished.

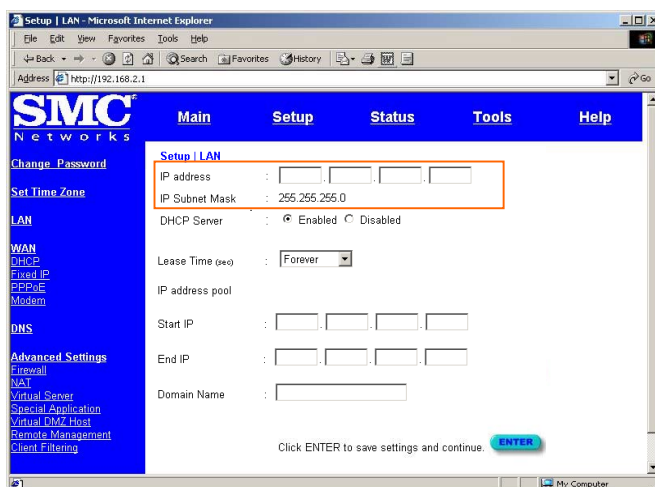


8. Select your time zone from the list and click “ENTER.”



The LAN screen is where you configure the LAN (Local Area Network) settings of your Barricade. These settings will only be visible to your local network and not to the Internet.

9. In most applications, you should not change the “IP address” from the default (192.168.2.1). However, if you are implementing your Barricade into an existing network, you may need to



change it to match your current addressing scheme.

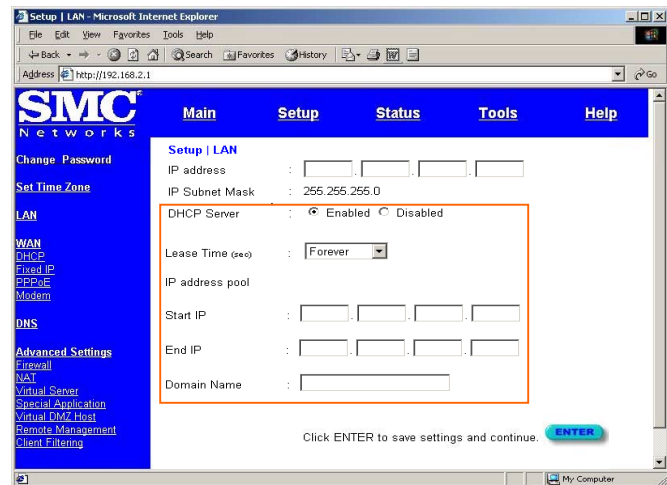
By using the Barricade's built-in DHCP (Dynamic Host Control Protocol) server you are allowing the Barricade to handle all the IP addressing on your Local Area Network (LAN). This can save you much of the time and hassle of administrating your network. If you have a server on your network that requires a static IP address, you may still use the DHCP server and manually assign a static IP address to your server. We recommend leaving the DHCP Server "Enabled."

10. In most applications, you should leave the DHCP Server "Enabled." If you prefer to handle all the IP addressing on your network yourself, click disable.

11. There is usually no need to change the IP address pool. If you change the pool range, make sure the first three octets match the Barricade's IP address, i.e., 192.168.2.xxx thru 192.168.2.yyy

A Domain Name Server (DNS) is like an index of names and Web addresses. If you type a Web address into your browser, such as www.whitehouse.gov, a DNS server will find that name in its index and find the matching IP address: 198.137.240.92. Most ISPs provide a DNS server for speed and convenience. Since you are connecting to the Internet with dynamic IP settings, it is likely that your DNS servers are also provided dynamically.

12. Click "ENTER" when finished.

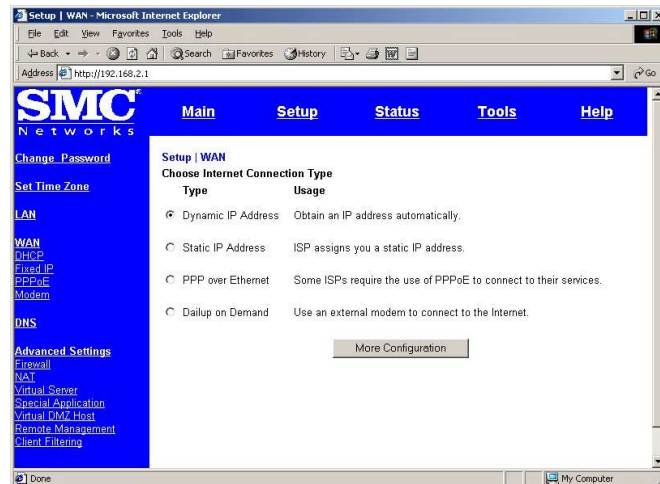


At this point, the LAN side of your Barricade is now configured. But you must still configure it to connect to the Internet. There are three different general configurations for high-speed Internet connections. You need to know about your Internet connection to determine which configuration to use. You found out most of what you need to know when you recorded your IP settings in earlier steps. Here are some guidelines to determine which configuration you should use:

- If you connect to the Internet using a Cable Modem, your ISP probably uses DHCP to issue an IP address to you. If you use a Cable Modem or you know you use a dynamic IP address, please go to "[Configuring Your Barricade for a Dynamic IP Address](#)" on the next page.
- If you connect to the Internet using a DSL Modem, your ISP probably requires you to manually enter your TCP/IP settings. If you have a DSL connection or if you know you use a static IP address, please go to "[Configuring Your Barricade for a Static IP Address](#)" on page 26.
- If you connect to the Internet using a DSL Modem and you use a login name and password, your ISP uses PPPoE. If your ISP requires a login name and a password or you know your ISP uses PPPoE, please go to "[Configuring Your Barricade for PPPoE](#)" on page 28.

Configuring Your Barricade for a Dynamic IP Address

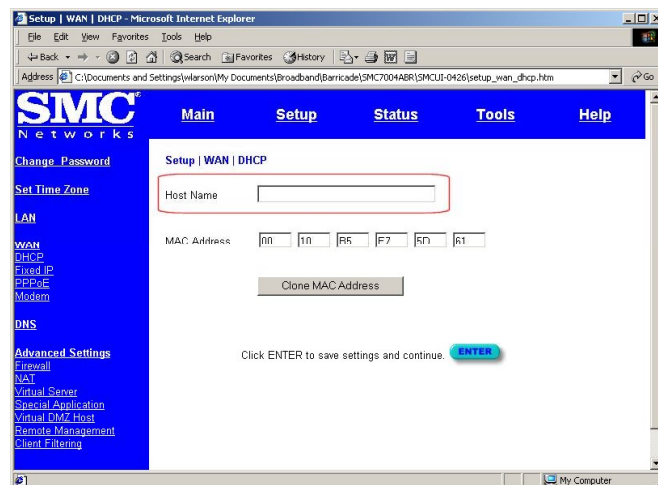
1. Select “Dynamic IP address,” and click “More Configuration.”



Both options on this page for further configuring your dynamic IP address are optional, depending upon how your ISP works. If your ISP does not require you to change either of these, you may skip these settings.

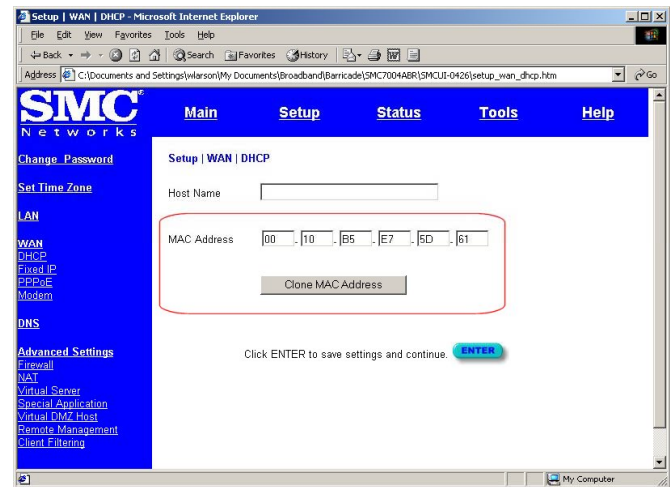
The **@Home** network usually requires your computer to have a “Host Name” to obtain an IP address from their network.

2. If you have a host name provided by your ISP (i.e., CX-1234-56789) enter it in the “Host Name” field.



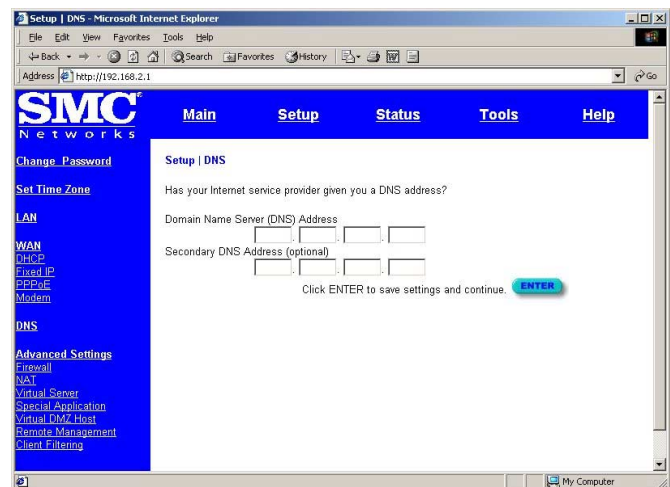
Some ISPs register the MAC Address of your network card. A MAC (Media Access Control) Address is a unique identification number (in hexadecimal digits) given to each networking device. Once registered, the ISP’s server will check to make sure that the MAC address they have registered matches the one connecting to their servers. If it does not match, you cannot connect. The Barricade’s MAC Address will not be the same as your network card’s address so you may need the Barricade to “Clone” the address from your network card. Then the ISP will find a MAC Address that matches the one they have recorded.

3. If you need to “Clone” the MAC Address from your network card, click “Clone MAC Address.” The MAC Address field will display the new address.
4. Click “ENTER” when finished.



A Domain Name Server (DNS) is like an index of names and Web addresses. If you type a Web address into your browser, such as www.whitehouse.gov, a DNS server will find that name in its index and find the matching IP address: 198.137.240.92. Most ISPs provide a DNS server for speed and convenience. Since you are connecting to the Internet with dynamic IP settings, it is likely that your DNS servers are also provided dynamically.

5. If you are connecting to the Internet with a dynamic IP address, you probably do not need to enter anything here. However, if there is a DNS server that you would rather use, enter the DNS server addresses in the spaces provided.
6. Click “ENTER” when finished.



Many ISPs use modems that automatically configure themselves. Sometimes connection information is stored on the modem and needs to be updated. You may need to shut down and restart your modem after you have configured your Barricade.

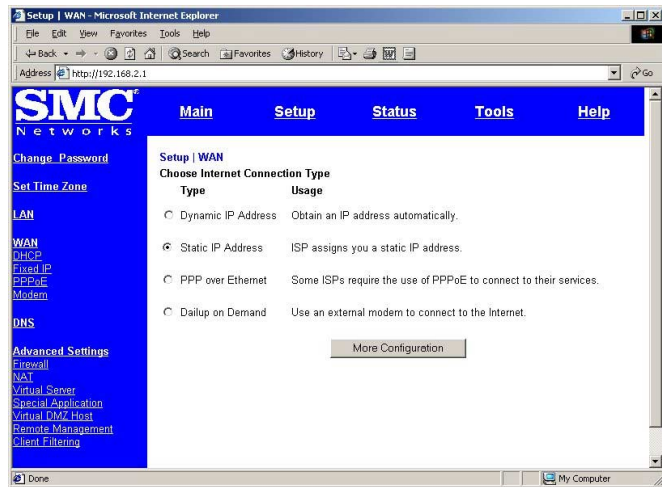
7. Restart your **cable modem** by removing the power, waiting a few seconds, and then reconnecting it.

Congratulations! Configuration is complete and your Barricade is now connected to the Internet. There are also some advanced configuration options that may be configured, but we do not recommend making any changes to these options unless you need to. You can consult the User Guide for information on these advanced settings.

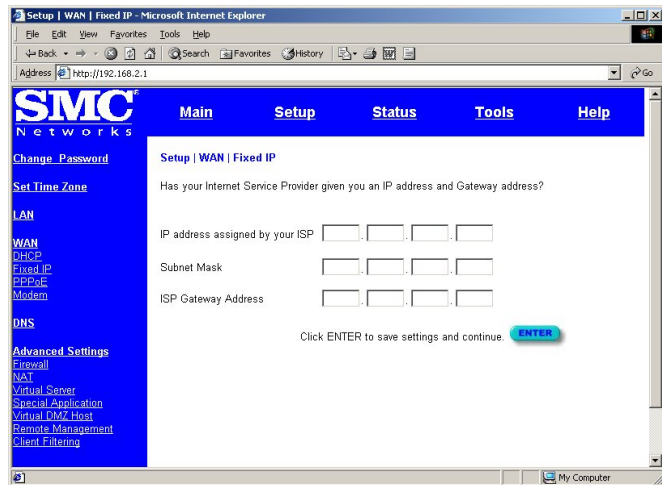
For instructions for the advanced configuration options, please refer to Chapter 4 of the User Guide found on the CD.

Configuring Your Barricade for a Static IP Address

1. Select “Static IP address,” and click “More Configuration.”



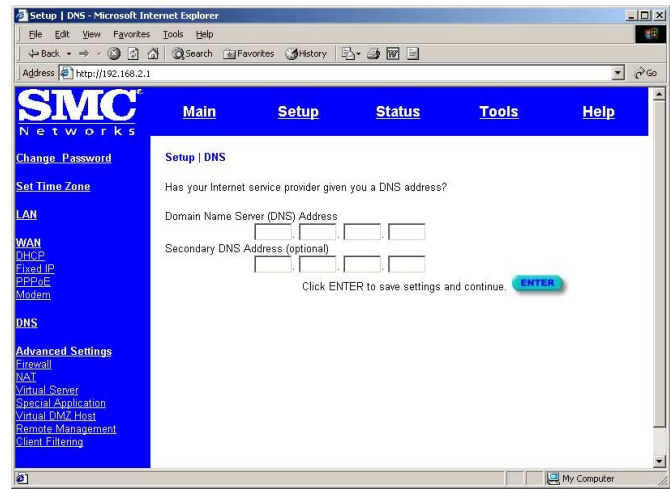
2. Enter the IP address, subnet mask, and gateway provided to you by your ISP in the appropriate fields. You recorded these numbers earlier when you configured your computer to connect to the Barricade.



3. Click “ENTER” when finished.

A Domain Name Server (DNS) is like an index of names and Web addresses. If you type a Web address into your browser, such as www.whitehouse.gov, a DNS server will find that name in its index and find the matching IP address: 198.137.240.92. Most ISPs provide a DNS server for speed and convenience. Since you are connecting to the Internet with static IP settings, it is likely that your ISP also provided DNS server addresses.

4. Enter the DNS server address(es) in the spaces provided.
5. Click “ENTER” when finished.



Many ISPs use modems that provide auto-configuration. Sometimes connection information is stored on the modem and needs to be updated. You may need to shut down and restart your modem after you have configured your Barricade.

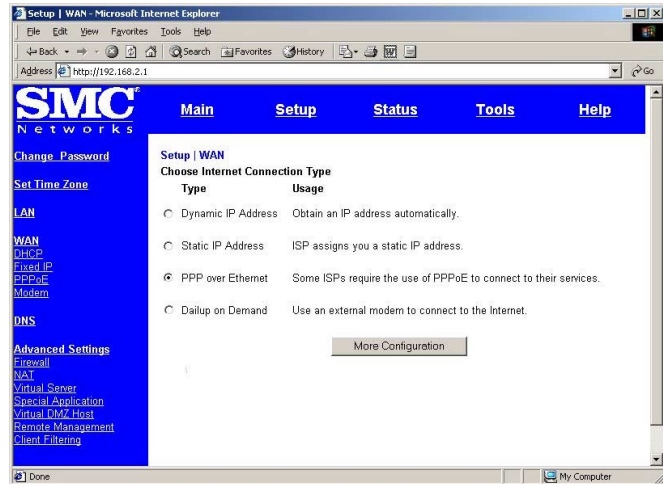
6. Restart your **DSL modem** by removing the power, waiting a few seconds, and then reconnecting it.

Congratulations! Configuration is complete and your Barricade is now connected to the Internet. There are also some advanced configuration options that may be configured, but we do not recommend making any changes to these options unless you need to.

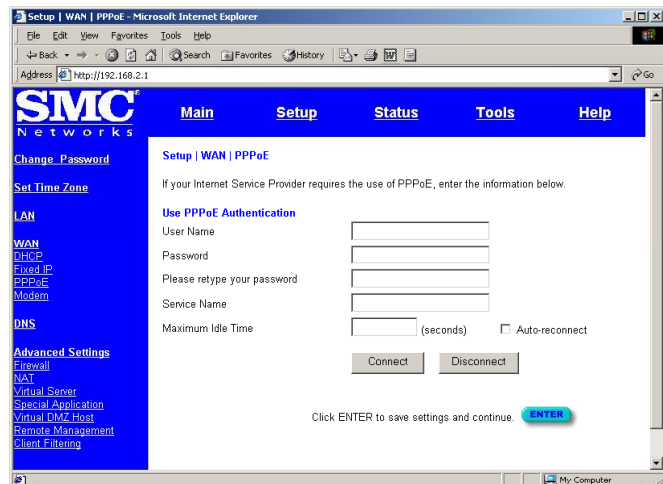
For instructions for the advanced configuration options, please refer to Chapter 4 of the User Guide found on the CD.

Configuring Your Barricade for PPPoE

1. Select “PPP over Ethernet,” and click “More Configuration.”



2. Enter the User Name and Password required by your ISP in the appropriate fields. Enter the password again for verification in the “Please retype password” field.
3. If your ISP has provided you with a “Service Name” enter it in the “Service Name” field, otherwise, leave it blank.
4. Click “ENTER” when finished.



A Domain Name Server (DNS) is like an index of names and Web addresses. If you type a Web address into your browser, such as www.whitehouse.gov, a DNS server will find that name in its index and find the matching IP address: 198.137.240.92. Most ISPs provide a DNS server for speed and convenience. Since you are connecting to the Internet with dynamic IP settings, it is likely that your DNS servers are also provided dynamically.

5. If you are connecting to the Internet through PPPoE, you probably do not need to enter anything here. However, if there is another DNS server that you would rather use, enter the DNS server addresses in the spaces provided.

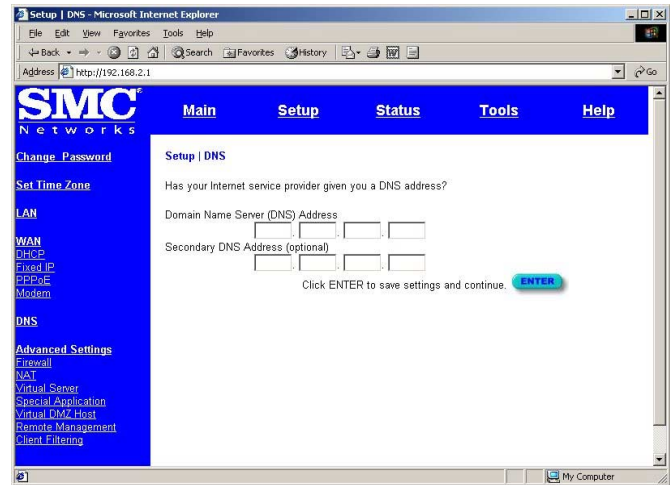
6. Click “ENTER” when finished.

Many ISPs use modems that provide auto-configuration. Sometimes connection information is stored on the modem and needs to be updated. You may need to shut down and restart your modem after you have configured your Barricade.

7. Restart your **DSL modem** by removing the power, waiting a few seconds, and then reconnecting it.

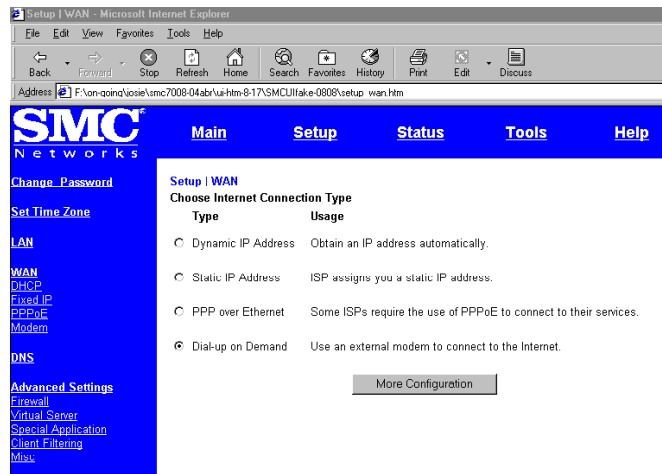
Congratulations! Configuration is complete and your Barricade is now connected to the Internet. There are also some advanced configuration options that may be configured, but we do not recommend making any changes to these options unless you need to.

For instructions for the advanced configuration options, please refer to Chapter 4 of the User Guide found on the CD.



Configuring Your Barricade for Dialup on Demand

1. Select “Dialup on Demand,” and click “More Configuration.”



2. If the serial port is used for primary Internet access, then mark the item “Check if you only use a dial-up modem to connect to the Internet.” If not marked, then this connection will only be used for backup access if the primary WAN link fails.

Setup | WAN | Dial-up Modem

Enter in your Internet Service Provider settings and click the ENTER button.

☐ Check if you only use a dial-up modem to connect to the Internet.

	Primary Dial-up	Secondary Dial-up
Dial-Up Service Phone Number (enter the number exactly as it should be dialed)	568-3685	
Dial-Up Account Information:		
User Name	streak	
Password	*****	
Password Verification (please retype your password)	*****	
Modem initialization string		

Has your Internet Service Provider given you an IP address?
☐ NO ☒ YES

(fill in information below)

IP address assigned by your ISP: 10.1.19.5
 Subnet Mask: 255.255.255.0

Click ENTER to save settings and continue.

3. Enter your ISP account user name and password in the “Dial-Up Account Information.”
4. Enter the “Modem Initialization String” provided by your modem manufacturer. The following is a sample initialization string: “ATQ1SO=1&D0&K0&W” as defined below:
 - Q1 : Inhibit result codes to DTE
 - S0=1 : Auto answer on first ring
 - D0 : Don’t care DTR
 - K0 : Disables DTE/DCE flow control
 - W : Write command to modem memory
5. In the “Maximum Idle time” field, enter the maximum idle time for the Barricade (in second).
6. If you are assigned a dynamic IP address every time you dial up, mark “No” for “Has your Internet Service Provider given you an IP address?” However, if your ISP has assigned a fixed IP address for you to use, mark “Yes” for this item and enter the IP address and subnet mask.
7. If your ISP has given you a secondary phone number, or if you have a secondary Internet service account, then fill in the relevant fields under “Secondary Dial-up.”

Configuring Your Computer for the Barricade Print Server

If you are not connecting your printer to your Barricade, skip this section.

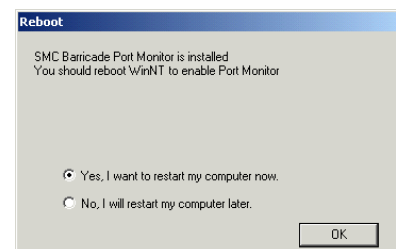
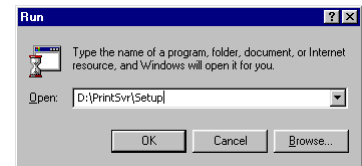
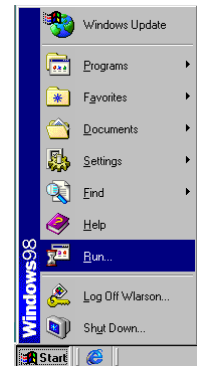
With the Barricade's built-in print server, you can connect your printer to the Barricade and print from any computer on your network. Each computer needs to have a "client" installed that will communicate with the Barricade's print server. Windows 2000 and UNIX and Linux operating systems have a print client already installed. If you are running Windows 95, 98, ME, 2000 or NT, you must use the SMC Barricade Print Server Monitor as your print client.

Configuring Your Computer for the Barricade Print Server for Windows 95/98/NT/ME/2000

Step 1: Installing SMC Barricade Print Server Monitor

You must first install the software that will allow your programs to print to the printer attached to the Barricade.

1. Insert the Installation CD into your CD-ROM drive.
2. Click "Start" and "Run..."
3. Type "D:\PrintSvr\Setup" and click "OK."
4. InstallShield will guide you through the installation process. Click "Next >" for each window and "Finish" when complete.
5. Windows must reboot for the changes to take place. When asked if you want to reboot now, select yes and click "OK."



Configuring Your Computer for the Barricade Print Server

If you are not connecting your printer to your Barricade, skip this section.

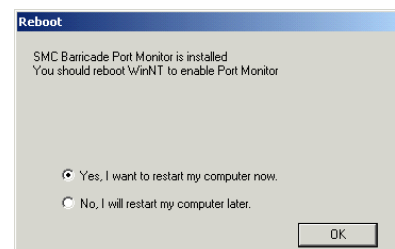
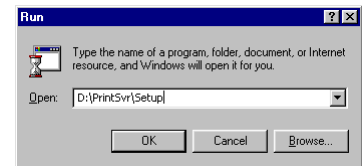
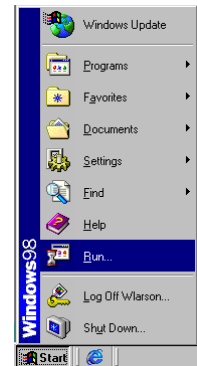
With the Barricade's built-in print server, you can connect your printer to the Barricade and print from any computer on your network. Each computer needs to have a "client" installed that will communicate with the Barricade's print server. Windows 2000 and UNIX and Linux operating systems have a print client already installed. If you are running Windows 95, 98, ME, 2000 or NT, you must use the SMC Barricade Print Server Monitor as your print client.

Configuring Your Computer for the Barricade Print Server for Windows 95/98/NT/ME/2000

Step 1: Installing SMC Barricade Print Server Monitor

You must first install the software that will allow your programs to print to the printer attached to the Barricade.

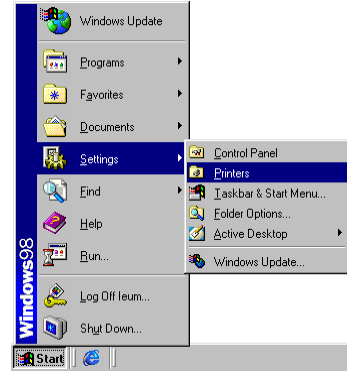
6. Insert the Installation CD into your CD-ROM drive.
7. Click "Start" and "Run..."
8. Type "D:\PrintSvr\Setup" and click "OK."
9. InstallShield will guide you through the installation process. Click "Next >" for each window and "Finish" when complete.
10. Windows must reboot for the changes to take place. When asked if you want to reboot now, select yes and click "OK."



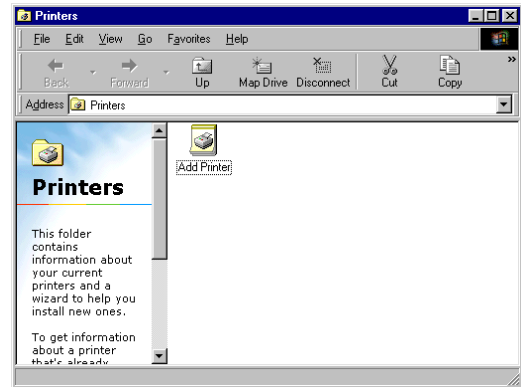
Step 2: Configuring SMC Barricade Print Server Monitor

Now that the software is installed, it must be configured to work properly.

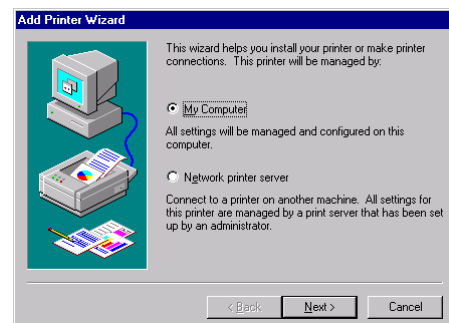
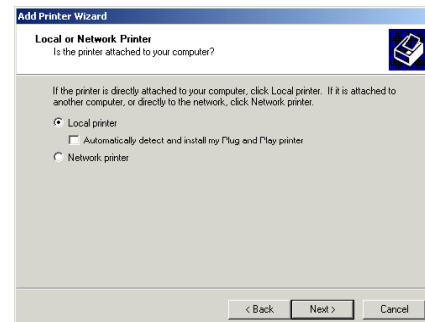
1. Click “Start,” click “Settings,” and then select “Printers.”



2. Double-click “Add Printer.”

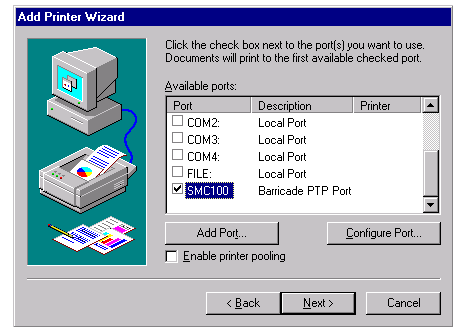
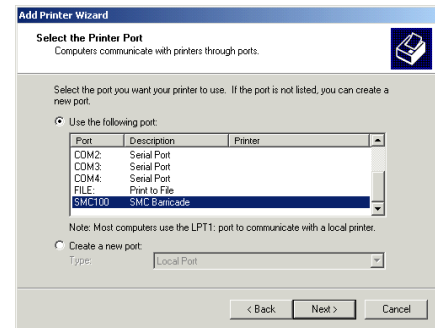


3. Follow the screen prompts to add your printer as a “Local printer” for **Windows 95/98/ME/2000** or as a printer managed by “My Computer” for **Windows NT**.

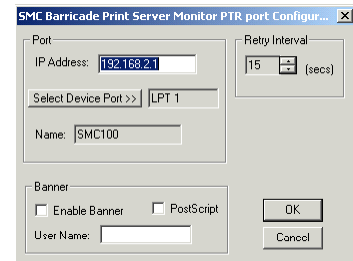


- From the list of manufacturers and printers in the next window, select the printer you have attached to the Barricade.

- Select the SMC Barricade Print Server Monitor (the default port name is “SMC100”) and click “Configure Port...”



- Enter the Barricade’s IP address in the “IP address” field (default is 192.168.2.1) and click “OK.”



- You will be asked if you want to print a test page. Click “Yes” to make sure that your printer is configured correctly.
- Your printer will now appear in the “Printers” window. Your computer is configured to print via the Barricade Print Server. Repeat these steps on each computer connected to the Barricade.

Configure the Network Printer in Unix Systems

Follow the traditional configuration procedure on Unix platforms to set up the Barricade print server. The printer name is “lpt1.”

FOR TECHNICAL SUPPORT, CALL:

From U.S.A. and Canada (24 hours, 7 days a week)
(800) SMC-4-YOU; (949) 707-2400; (949) 707-2460 (Fax)
From Europe (8:00 AM - 5:30 PM UK Greenwich Mean Time)
44 (0) 1188 748740; 44 (0) 1189 748741 (Fax)

INTERNET

E-Mail address:

techsupport@smc.com
european.techsupport@smc-europe.com

Driver updates:

<http://www.smc.com/support.htm>

World Wide Web:

<http://www.smc.com/>

FOR LITERATURE OR ADVERTISING RESPONSE, CALL:

U.S.A. and Canada	(800) SMC-4-YOU;	Fax (949) 707-2460
Spain	34-93-477-4920;	Fax 34-93-477-3774
UK	44 (0) 1188 748700;	Fax 44 (0) 1189 748701
Southern Europe	33 (1) 41.18.68.68;	Fax 33 (1) 41.18.68.69
Central/Eastern Europe	49 (0) 89 92861-200;	Fax 49 (0) 89 92861-230
Nordic	46 (8) 564 33145;	Fax 46 (8) 87 62 62
Middle East	971-48818410;	Fax 971-48817993
South Africa	27 (0) 11-3936491;	Fax 27 (0) 11-3936491
PRC	86-10-6235-4958;	Fax 86-10-6235-4962
Taiwan	886-2-2659-9669;	Fax 886-2-2659-9666
Aisa Pacific	(65) 238 6556;	Fax (65) 238 6466
Korea	82-2-553-0860;	Fax 82-2-553-7202
Japan	81-45-224-2332;	Fax 81-45-224-2331
Australia	61-2-9416-0437;	Fax 61-2-9416-0474
India	91-22-8204437;	Fax 91-22-8204443

SMC[®]

6 Hughes
Irvine, CA 92618
Phone: (949) 707-2400

Model Numbers: SMC7004ABR
SMC7008ABR
Publication Number: 150200002700A
Edition Number: E082001-R01 F1.3