

Windows XP

Barricade

Configuration

Guide

The Information in this guide applies to the:

- SMC Barricade Broadband Router (SMC7004-ABR - Part Number 750.5702 / 750.5756)
 - SMC Barricade Broadband Router (SMC7004-AWBR - Part Number 750.5435)
 - SMC Barricade Broadband Router (SMC7008-ABR)
-

The guide will walk you through the configuration process for Windows XP prior to setting up the SMC Barricade Router.

The information outlined in this guide will help you properly configure your Windows XP computer so it can access the SMC Barricade web-based administration page.

This installation guide is broken down into 3 sections:

Section 1: Dynamic IP Configuration

- Step 1: Open Control Panel
- Step 2: Open Network and Internet Connections
- Step 3: Open Network Connections
- Step 4: Access Network Adapter Properties
- Step 5: Access TCP/IP Properties
- Step 6: Configure TCP/IP Properties
- Step 7: Complete Configuration

Section 2: Static IP Configuration

- Step 1: Open Control Panel
- Step 2: Open Network and Internet Connections
- Step 3: Open Network Connections
- Step 4: Access Network Adapter Properties
- Step 5: Access TCP/IP Properties
- Step 6: Configure TCP/IP Properties
- Step 7: TCP/IP Example Settings
- Step 8: Complete Configuration

Section 3: Internet Explorer Configuration

- Step 1: Launch Internet Explorer
- Step 2: Open Internet Options
- Step 3: Access Internet Connections
- Step 4: Configure Connection
- Step 5: Configure LAN Settings
- Step 6: Complete Configuration

Section 4: Netscape Configuration

- Step 1: Launch Netscape
- Step 2: Open Preferences
- Step 3: Access Advanced Settings
- Step 4: Configure Proxies
- Step 5: Complete Configuration

Before you begin this configuration please verify that you have the item listed below. You may or may not need this item but it is a good idea to have it available.

- Windows XP CD

Section 1: Configuring Windows XP with a Dynamic IP

Step 1: Click on the [Start] button and then click on the [Control Panel] icon.



Figure 1.1

Step 2: Double-click the [Network and Internet Connections] icon



Figure 1.2

Step 3: Double-click the [Network Connections] icon



Figure 1.3

Step 4: In the [Network Connections] dialog box, locate the network adapter that is connected to the Barricade. Right mouse-click on this icon and select the [Properties] option.

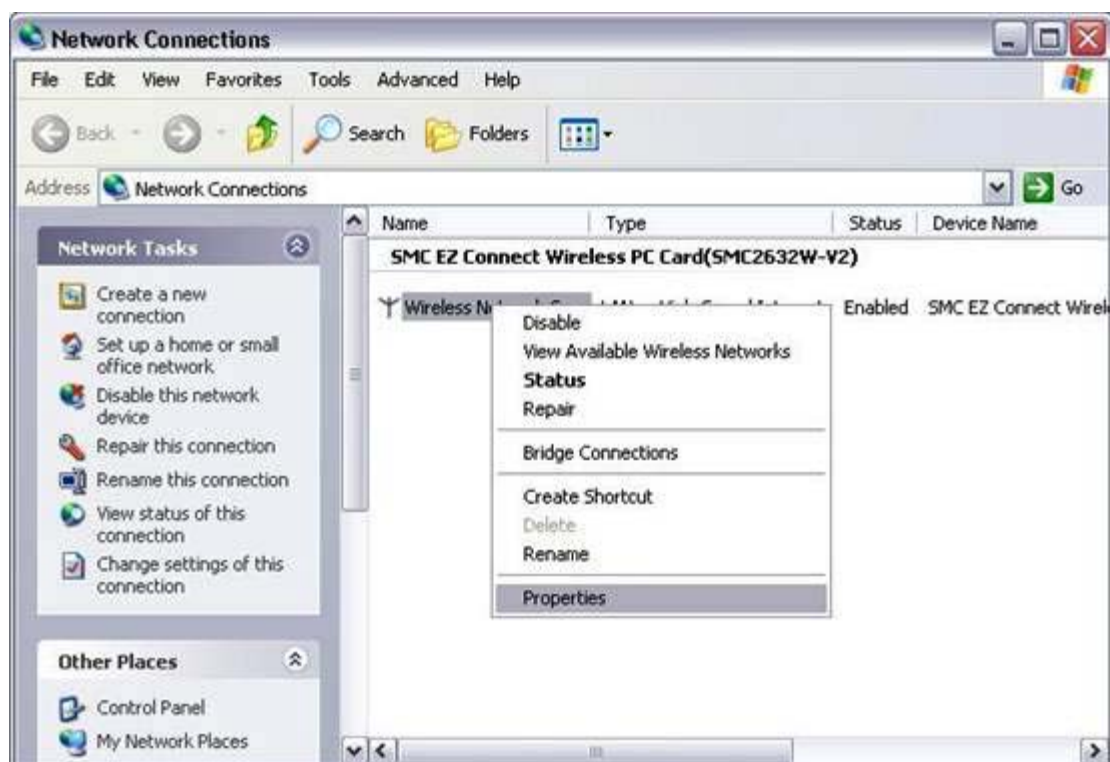


Figure 1.4

Step 5: Verify the [Internet Protocol TCP/IP] option is selected and then highlight that option and click the [Properties] button.



Figure 1.5

Step 6: In the [Internet Protocol (TCP/IP) Properties] dialog box, on the [General] tab, verify that the follow options are selected:

- [Obtain IP address automatically]
- [Obtain DNS servers automatically]



Figure 1.6

Step 7: Click the [OK] button to save your changes to the TCP/IP Properties. Then click the [OK] button on the [Network Connection] dialog box to save this configuration.

If prompted, please reboot your computer.

When you have completed the above configuration process, please refer one of the sections below based on which browser you are using to configure your Barricade.

- Section 3: Internet Explorer
- Section 4: Netscape

These sections outline the process to configure your web browser to access the Barricade web-based admin site.

Section 2: Configuring Windows XP with a Static IP

Step 1: Click on the [Start] button and then click on the [Control Panel] icon.



Figure 2.1

Step 2: In the [Control Panel] dialog box, double-click the [Network and Internet Connections] icon.



Figure 2.2

Step 3: In the [Network and Internet Connections] dialog box, double-click the [Network Connections] icon.



Figure 2.3

Step 4: In the [Network Connections] dialog box, locate the network adapter that is connected to the Barricade. Right mouse-click on this icon and select the [Properties] option.



Figure 2.4

Step 5: Verify the [Internet Protocol TCP/IP] option is checked. Highlight the [Internet Protocol (TCP/IP)] option and click the [Properties] button.



Figure 2.5

Step 6: In the [Internet Protocol (TCP/IP) Properties] dialog box, on the [General] tab, verify that the follow options are selected:

- [Use the following IP address:]
- Use the following DNS server addresses:]



Figure 2.6

Step 7: When you select the options above the IP and DNS text boxes will activate. Now you can input your static IP configuration. In this example we used the following information:

IP ADDRESS INFO:

- IP address: 192.168.2.50
- Subnet mask: 255.255.255.0
- Default Gateway: 192.168.2.1

DNS SERVER INFO:

- Preferred DNS server: 192.168.2.1
- Alternate DNS server: 0.0.0.0

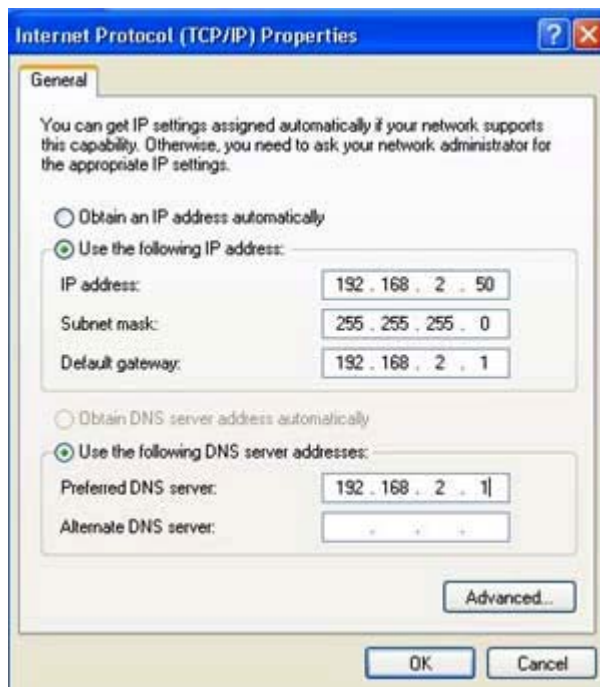


Figure 2.7

Step 8: Click the [OK] button to save your changes to the TCP/IP Properties. Then click the [OK] button on the [Network Connection] dialog box to save this configuration.

If prompted, please reboot your computer.

When you have completed the above configuration process, please refer one of the sections below based on which browser you are using to configure your Barricade.

- Section 3: Internet Explorer
- Section 4: Netscape

These sections outline the process to configure your web browser to access the Barricade web-based admin site.

Section 3: Configuring Internet Explorer version 5 or above

The information in this section outlines the configuration requirements for Internet Explorer in order to access the Barricade Admin web site. This information applies to the following versions:

- Internet Explorer 5.0
- Internet Explorer 5.5
- Internet Explorer 6.0

Note: You do not need to be online to access the Barricade Administration screen.

Step 1: Launch Internet Explorer.

Step 2: Click on [Tools] on tools in the top menu.



Figure 3.1

Step 3: Select [Internet Options...]



Figure 3.3

Step 3: Click on the [Connections] tab, in the [Internet Options] dialog box.

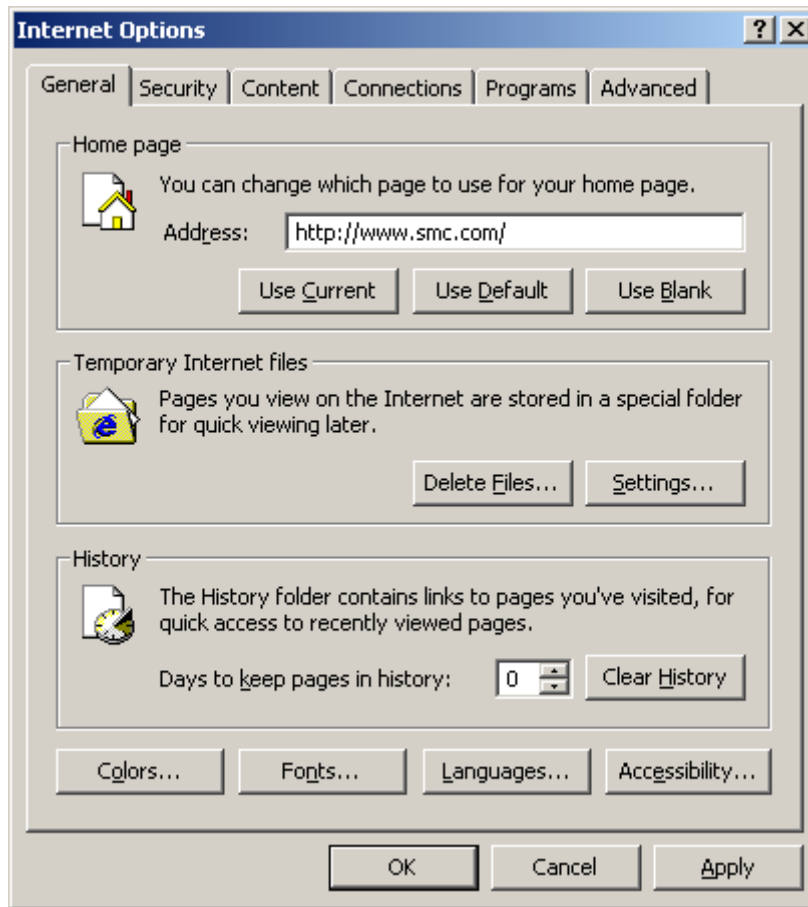


Figure 3.3

Step 4: On the [Connection] tab, in the [Dial-up settings] section choose the [Never dial a connection] option.

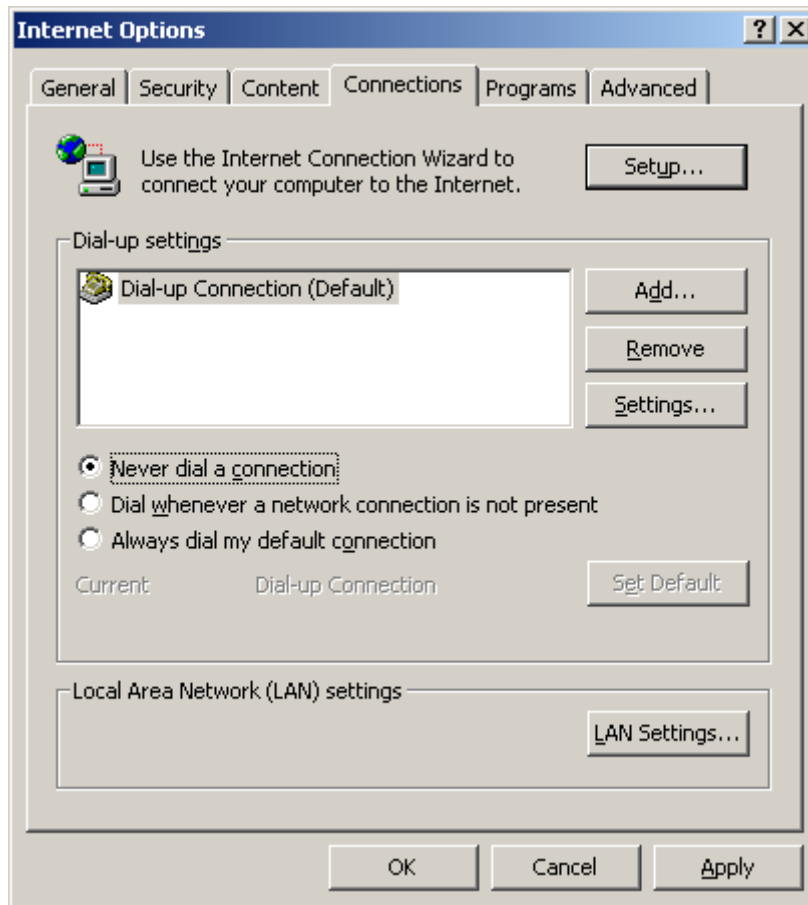


Figure 3.4

Step 5: In the [Local Area Network (LAN) settings] section click on the [LAN Settings...] button.

Step 6: In the [Local Area Network (LAN) Settings] dialog box, verify the follow options are UNCHECKED:

- Automatically detect settings
- Use automatic configuration script
- Use a proxy server

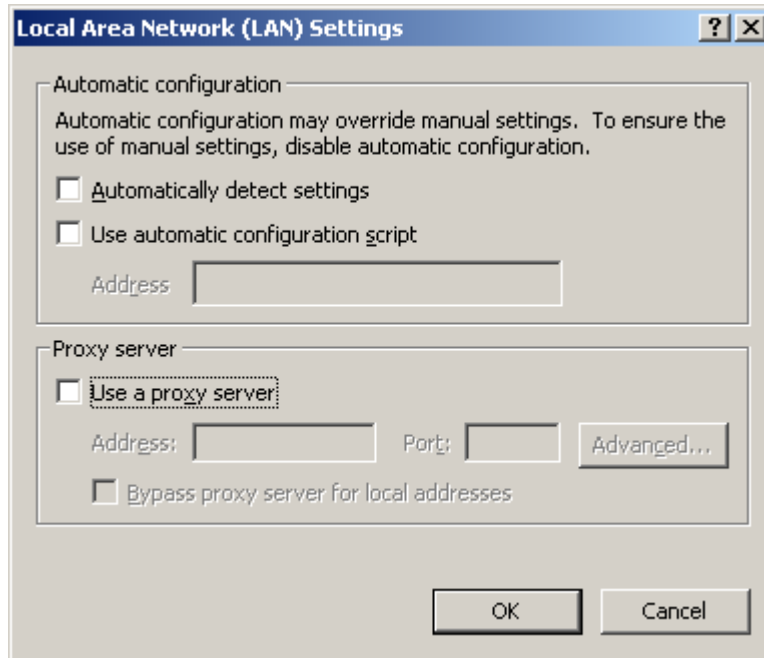


Figure 3.6

When all of these options are unchecked, click the [OK] to close this dialog box.

Step 7: Click the [OK] button again to save this configuration and close the [Internet Options] dialog box.

Once you have completed this configuration you are ready to access the Barricade Administration website to configure your Internet connection and Network settings. Please refer to the Quick Install Guide for information on how to configure the Barricade.

Section 3: Configuring Netscape

The information in this section outlines the configuration requirements for Netscape in order to access the Barricade Admin web site. This information applies to the following versions:

- Netscape 6
- Netscape Communicator
- Netscape Navigator

Step 1: Launch Netscape

Step 2: Click the [Edit] button on the top menu bar.



Figure 3.2

Step 3: Select the [Preferences] option.

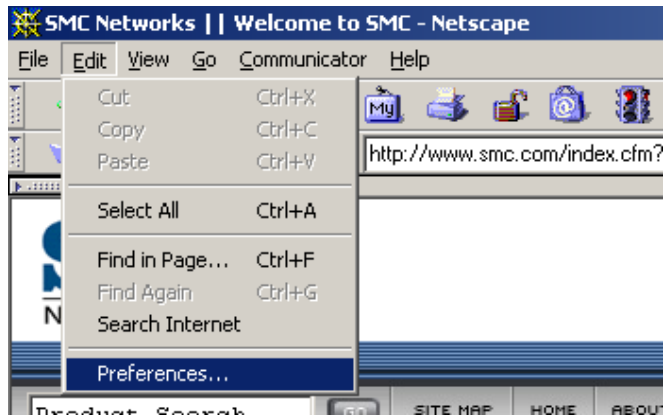


Figure 3.3

Step 4: After clicking the [Preferences] option the Netscape Preferences dialog box will display

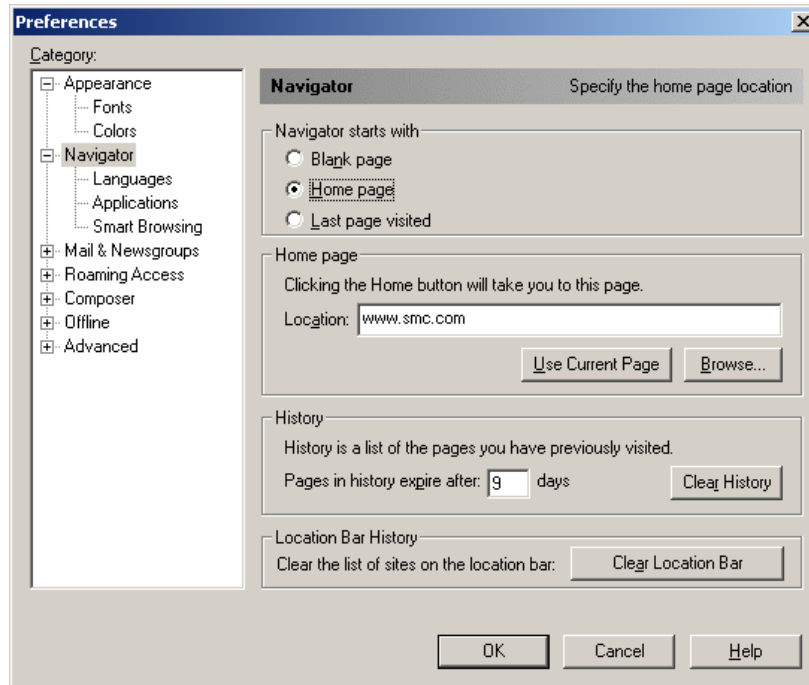


Figure 3.4

Step 5: In the [Category:] section, locate and click on the [Advanced] section to expand it.

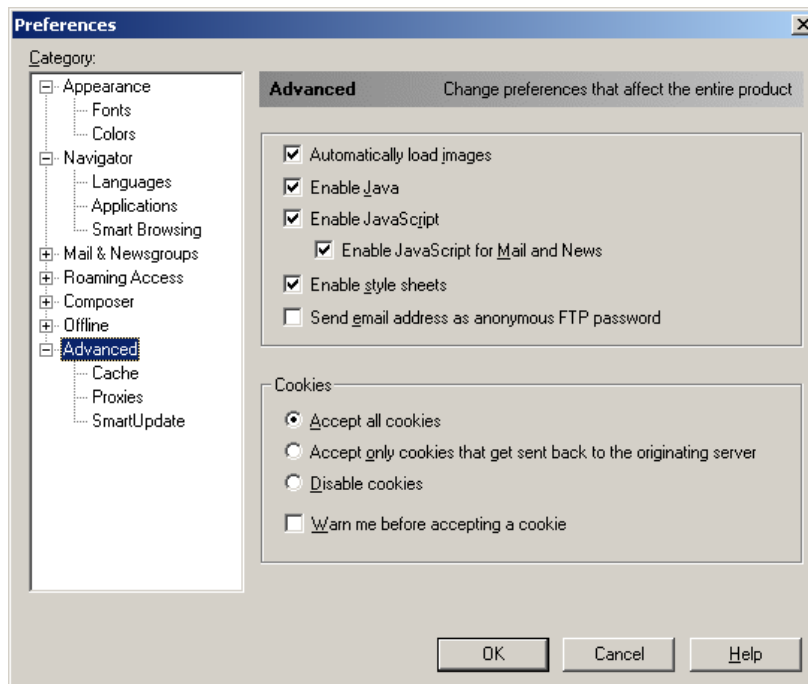


Figure 3.5

Step 6: Click on [Proxies] option and verify that you have the [Direct connection to the Internet] open selected.

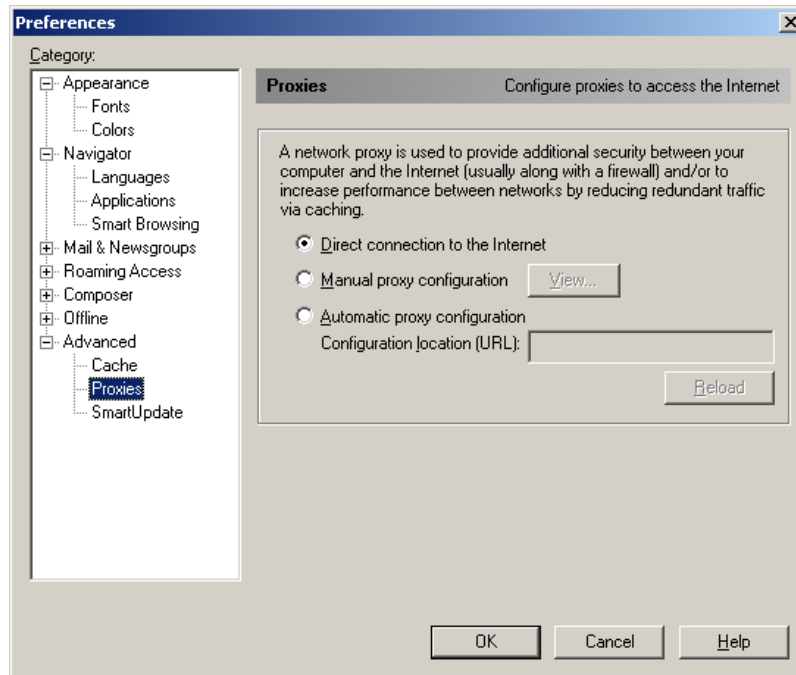


Figure 3.6

Step 7: Click the [OK] button again to save this configuration and close the [Preferences] dialog box.

Once you have completed this configuration you are ready to access the Barricade Administration website to configure your Internet connection and Network settings. Please refer to the Quick Install Guide for information on how to configure the Barricade.