

Read Me for PPTP WAN Type

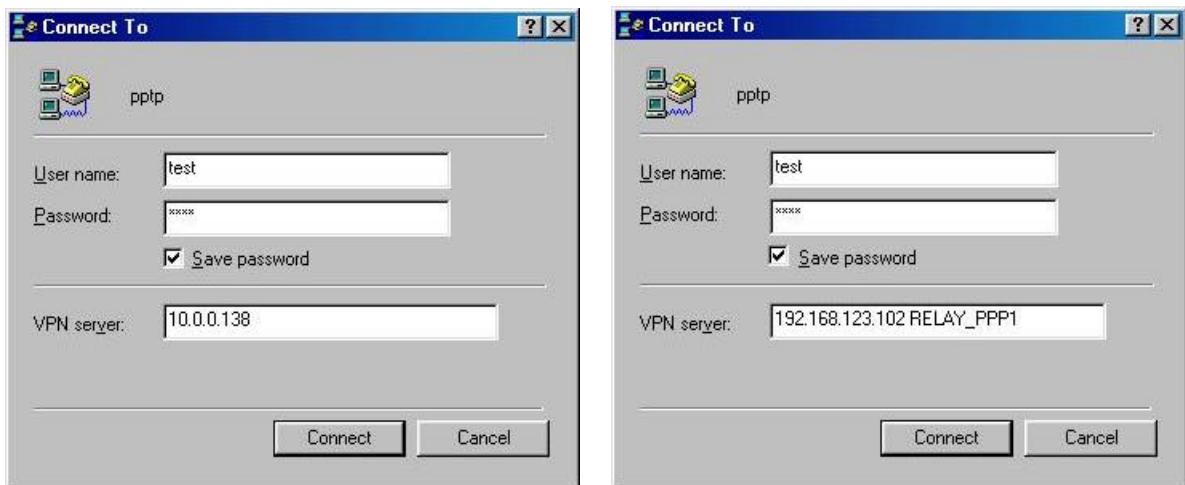
Version 2001.08.27

1. Introduction

PPTP is the fifth WAN type supported by the Router. It is specifically for many European ISPs where Alcatel's ADSL Network Termination is deployed.

2. How do I know my WAN type is PPTP?

In general, if your ISP provides you PPTP WAN type, they will ask you to install Microsoft's VPN adapter. And you have to launch Microsoft's Dial-up Network to connect to your ISP. For example:



The information provided by the ISP is:

1. **User name** and **Password** to authenticate yourself. You have to input them to proper fields when you launch the VPN dialer.
2. **VPN Server**. In general, this is an IP address, e.g. "10.0.0.138." You have to assign it as the VPN server when you launch the VPN dialer. Sometime, this is an IP address plus an identifier. For example, "10.0.0.138 RELAY_PPP1."

You have to configure the TCP/IP setting of your PC properly. It should be on the same subnet of VPN server. For example, IP address of your PC is 10.0.0.140 and subnet mask is 255.255.255.0.

3. Configure PPTP WAN type of the Router

Just follow steps below to configure the PPTP WAN type:

1. Configure your PC to obtain the TCP/IP configuration automatically. Your PC can obtain IP address from the Router.
2. Connect to the Web UI of the Router. And log in as administrator. Click "Primary Setup" and choose your WAN Type as "PPTP."
3. Set **My IP Address** as the IP address that ISP assigned to your PC, e.g. 10.0.0.140.
4. Set **My Subnet Mask** as the mask that ISP assigned to your PC, e.g. 255.255.255.0.
5. Set **Server IP Address** as the IP address of the VPN Server, e.g. 10.0.0.138.
6. Input the PPTP **Account** and **Password**.
7. Input the **Connection ID** if your ISP requires it, e.g. RELAY_PPP1. *If it is no use, keep it empty or the connection will fail.*

SMC Barricade Broadband Router (R1.93k)

SMC
Networks

- [Status](#)
- [Toolbox](#)
- **[Primary Setup](#)**
- [DHCP Server](#)
- [Virtual Server](#)
- [Special AP](#)
- [Access Control](#)
- [Misc Items](#)

Log out

Primary Setup

Item	Setting
▶ LAN IP Address	192.168.123.254
▶ WAN Type	PPTP Change...
▶ My IP Address	10.0.0.140
▶ My Subnet Mask	255.255.255.0
▶ Server IP Address	10.0.0.138
▶ PPTP Account	test
▶ PPTP Password	*****
▶ Connection ID	<input type="text"/> (optional)
▶ Maximum Idle Time	<input type="text" value="300"/> seconds <input type="checkbox"/> Auto-reconnect

[Save](#) [Undo](#) [Help](#)

8. Save the setting and restart the router.
9. Try to ping 4.0.0.1. If the reply is positive, the router and your PC has been successfully configured for PPTP WAN type.

4. FAQ

1. Where can I specify the IP address of my DNS server?

Ans: In general, the Router will negotiate with your ISP and get the IP address of the DNS servers. If you configure your PC as obtaining IP address automatically, your PC will get the proper DNS server from the Router.

2. Why can't I access the DSL modem when my PC is behind the router?

Ans: Currently, you can not access the IP subnet of the DSL mode through the Router. If you have to do so, please connect to the DSL modem directly or change your WAN type to "Static IP Address".